



FAY
ALREEMAN

EVERYTHING WE DO COMES FROM THE HEART

ALDAR IS ONE OF THE MOST TRUSTED AND RECOGNISED REAL-ESTATE LIFESTYLE DEVELOPERS IN THE UAE. OUR GOAL ISN'T SIMPLY TO BUILD PROPERTIES; WE STRIVE TO SHAPE COMMUNITIES WHERE PEOPLE CAN THRIVE. COMMUNITIES THAT BECOME HOMES, BRIMMING WITH LIFE AND EVERYTHING WE LOVE. BECAUSE HOME ISN'T JUST A PLACE; IT'S A FEELING. AND WE PROMISE TO MAKE IT A POSITIVE ONE THAT ENRICHES YOU, EVERY DAY.

REVENUE

AED 8.58BN
FY 2021

NET PROFIT

AED 2.33BN
FY 2020

INVESTMENT PORTFOLIO INCREASE

AED 1BN
FY 2021

REVENUE SALES

AED 7.2BN
FY 2021



ABU DHABI

THE CITY WE CALL HOME

ABU DHABI IS A CITY WITH HEART. PEOPLE FROM ALL OVER THE WORLD HAVE BEEN DRAWN TO ITS NATURAL BEAUTY, VIBRANT CULTURAL SCENE, INSPIRING HERITAGE AND DYNAMIC BUSINESS LANDSCAPE. IT IS THE CAPITAL OF THE UAE AND A PLACE THAT PEOPLE LOVE TO CALL HOME.



AL SHAMKHA

CONNECT TO THE WORLD FROM YOUR NEIGHBOURHOOD

ABU DHABI INTERNATIONAL AIRPORT LIES JUST MINUTES FROM YOUR DRIVEWAY IN AL SHAMKHA, WHILE A DEVELOPED ROAD NETWORK ON ALL SIDES CONNECTS YOU TO THE MAJOR HUBS WITHIN ABU DHABI AND DUBAI. YOU CAN ALSO ENJOY THE CONVENIENCE OF NEARBY STORES, MALLS, AND SERVICES, AS WELL AS EXCELLENT INFRASTRUCTURE. IF YOU'RE LOOKING TO GIVE YOUR FAMILY THE BLISSFUL BALANCE OF A QUIET YET MODERN LIFESTYLE, THEN AL SHAMKHA IS THE PERFECT PLACE TO CALL HOME.



ALREEMAN

A COMMUNITY CREATED AROUND YOU

ALREEMAN CREATES A UNIQUE COMMUNITY LANDSCAPE, WHERE EVERY INDIVIDUAL CAN LIVE THE LIFE OF THEIR DREAMS—FROM PARKS TO JOGGING AND CYCLING TRACKS FOR THE ACTIVE, TO SCHOOLS AND COMMUNITY CENTERS FOR FAMILIES. THE COMMUNITY IS ALSO HOME TO MEDICAL CLINICS AND MOSQUES, WHILE A SPECTRUM OF ICONIC DESTINATIONS ARE WITHIN EASY REACH ON YAS ISLAND, INCLUDING AL FORSAN INTERNATIONAL SPORTS RESORT, AL GHAZAL GOLF CLUB, MASDAR CITY, AND YAS MALL.





072

FAY ALREEMAN

FIND A HOME WITH PERSONALITY

FAY ALREEMAN IS WHERE MODERN EMIRATI LIVING IS DEFINED AND DESIGNED BY YOU. YOUR EXPANSIVE NEW HOME BEGINS WITH A SELECTION OF EXTERIOR FACADES AND INTERIOR FINISHES, WHILE A RANGE OF COMMUNITY FACILITIES OFFERS ENDLESS CHOICE FOR HOW TO SPEND YOUR DAYS.



EXPANSIVE GARDENS
WHERE LIFE BECOMES
LIMITLESS





GIVE THEIR CHILDHOODS
THE SPACE THEY DESERVE

VILLA TYPES

CHOOSE FROM VILLAS OF EVERY VARIETY

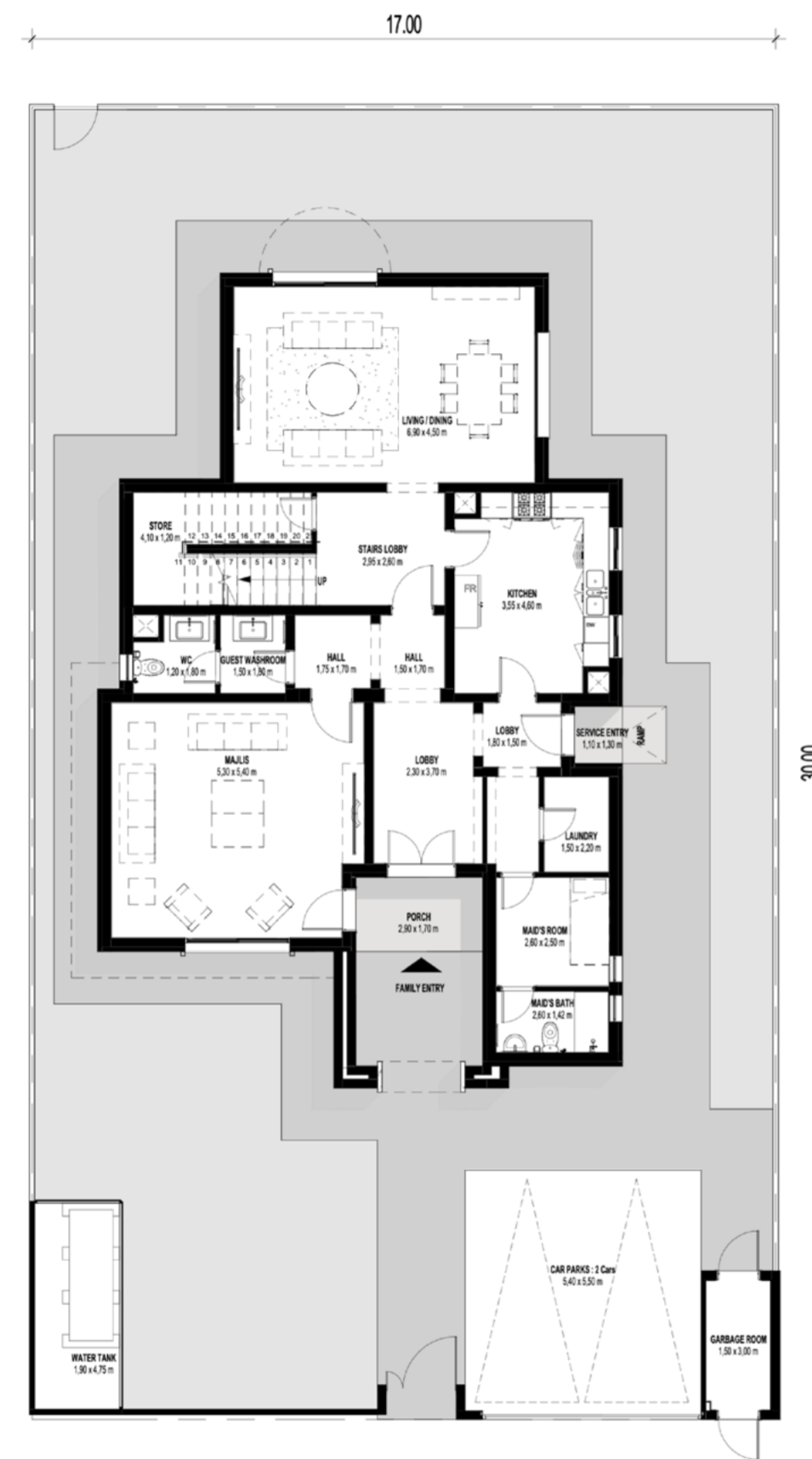
LET YOUR PERSONAL TASTE GUIDE YOU WITH A CUSTOMISED VILLA THAT GIVES FAMILIES ALL THE SPACE THEY NEED TO GROW AND THRIVE. CHOOSE FROM A 3 BED MEDITERRANEAN VILLA LAYOUT, 4-5 BED VILLA IN EITHER A MEDITERRANEAN OR MODERN ARABIC STYLE, WHILE 6-BED VILLAS HAVE AN ADDITIONAL THIRD CONTEMPORARY STYLE OPTION.





MEDITERRANEAN
3 BEDROOM

MEDITERRANEAN
3 BEDROOM + MAID'S ROOM
 INTERNAL SELLABLE AREA: **301 SQM** | BALCONY: **10 SQM**



GROUND FLOOR



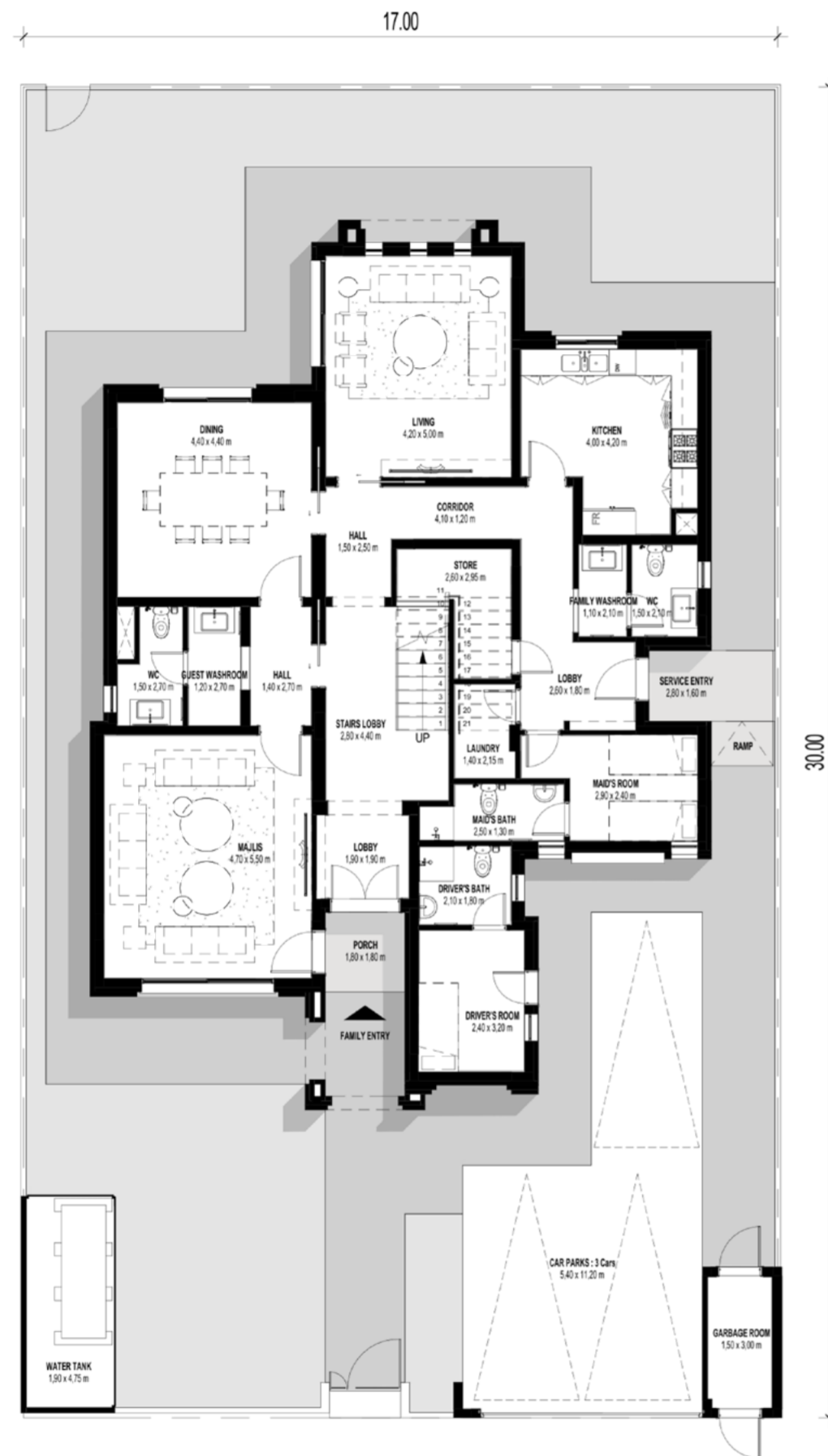
FIRST FLOOR

Disclaimer: This plan is reproduced for illustrative purposes as an example of a typical plot layout and Aldar makes no representation of warranty in relation to any of the information shown.

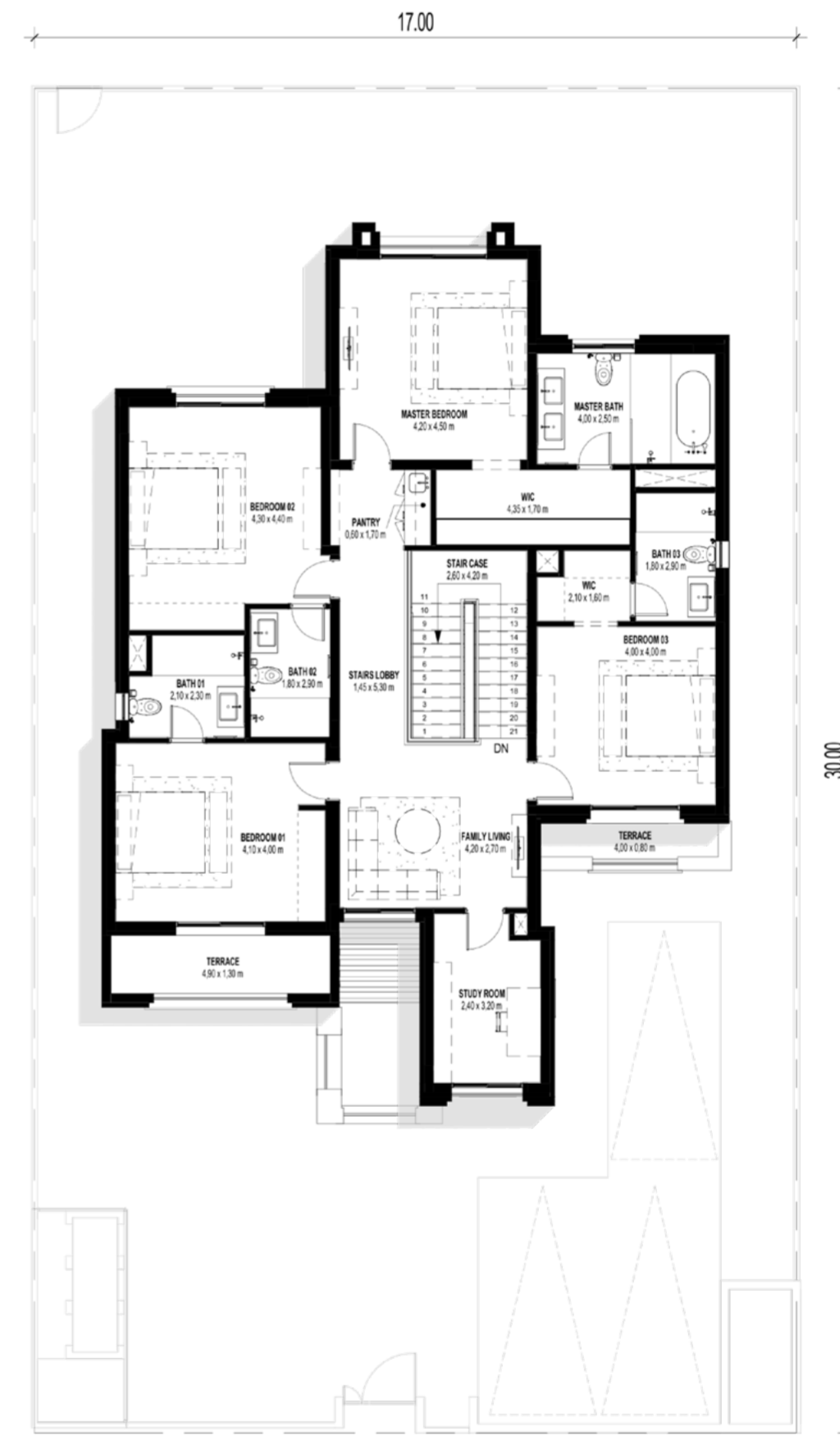


MODERN ARABIC
4 BEDROOM

MODERN ARABIC
4 BEDROOM + MAID'S ROOM
 INTERNAL SELLABLE AREA: **378 SQM** | BALCONY: **12 SQM**



GROUND FLOOR



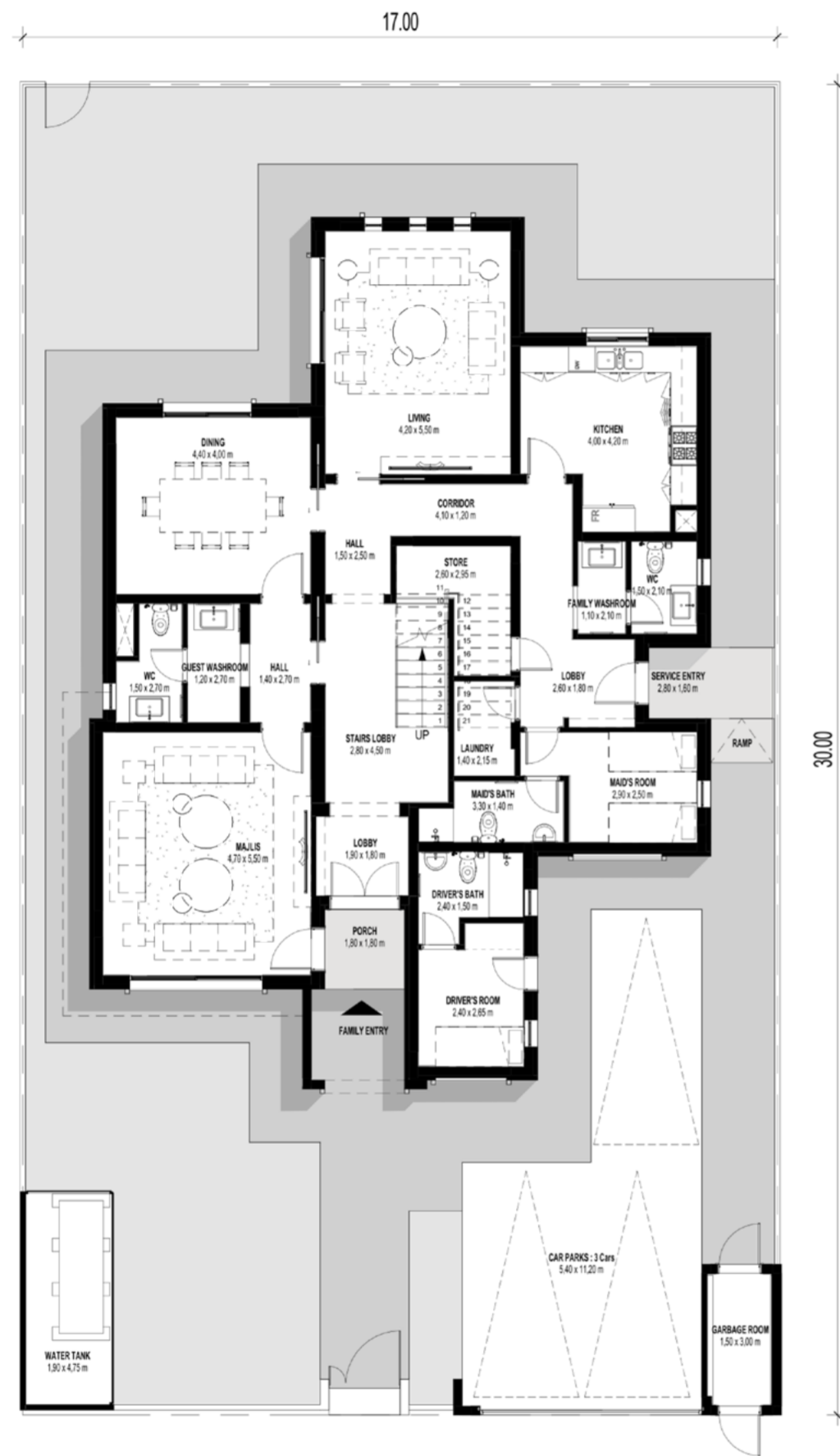
FIRST FLOOR

Disclaimer: This plan is reproduced for illustrative purposes as an example of a typical plot layout and Aldar makes no representation of warranty in relation to any of the information shown.

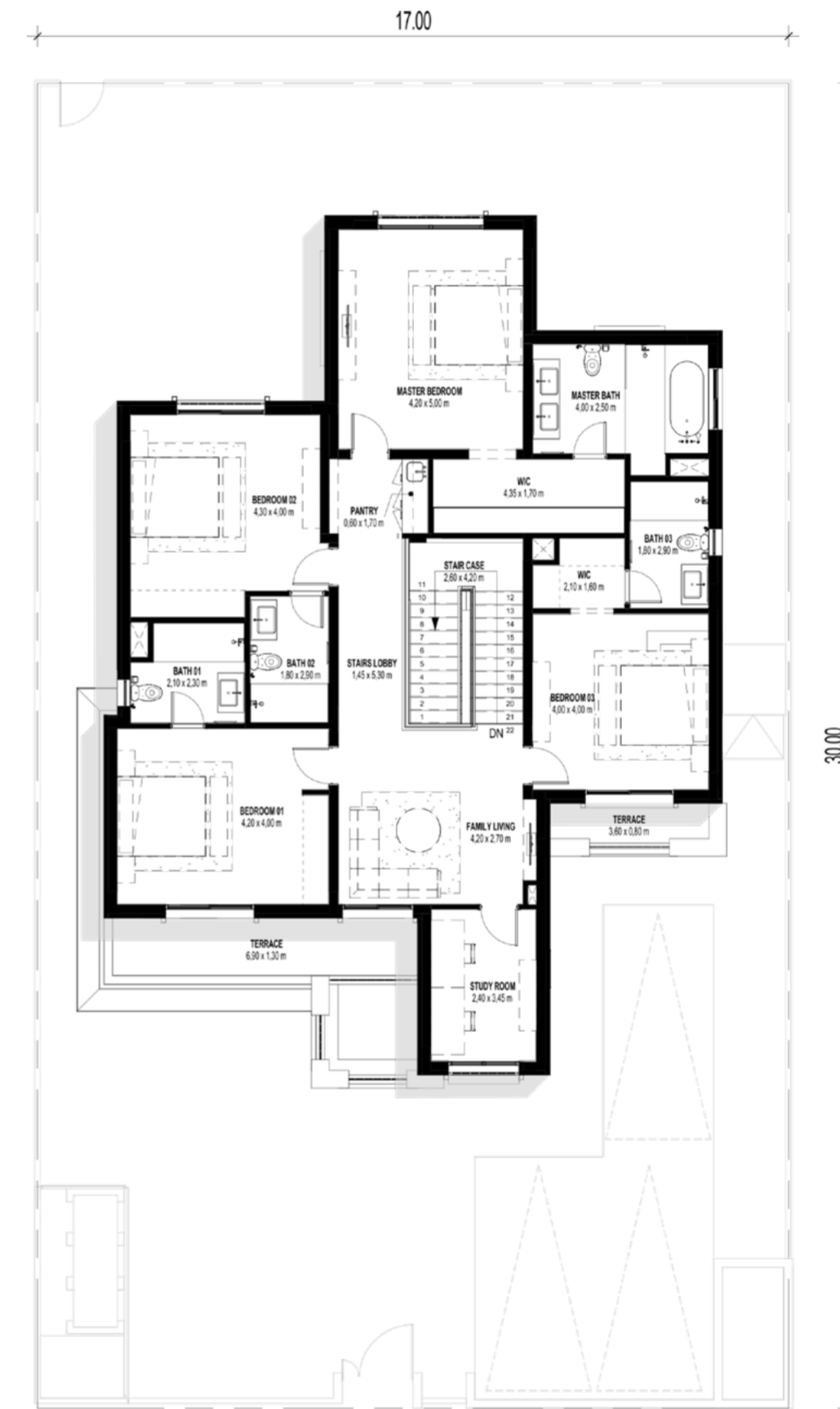


MEDITERRANEAN
4 BEDROOM

MEDITERRANEAN
4 BEDROOM + MAID'S ROOM
 INTERNAL SELLABLE AREA: **376 SQM** | BALCONY: **15 SQM**



GROUND FLOOR



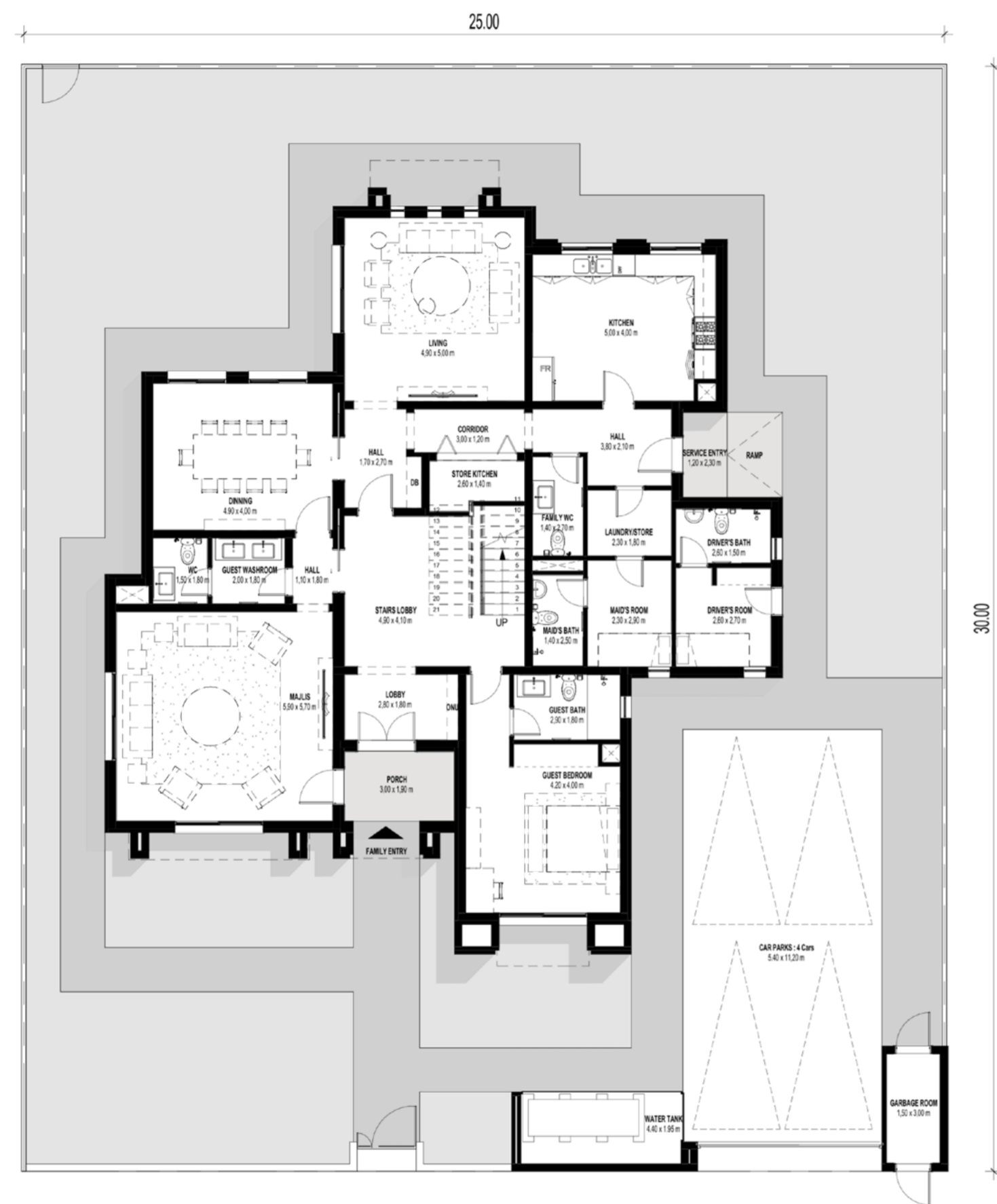
FIRST FLOOR

Disclaimer: This plan is reproduced for illustrative purposes as an example of a typical plot layout and Aldar makes no representation of warranty in relation to any of the information shown.



MODERN ARABIC
5 BEDROOM

MODERN ARABIC
5 BEDROOM + MAID'S ROOM
 INTERNAL SELLABLE AREA: **463 SQM** | BALCONY: **45 SQM**



GROUND FLOOR



FIRST FLOOR

Disclaimer: This plan is reproduced for illustrative purposes as an example of a typical plot layout and Aldar makes no representation of warranty in relation to any of the information shown.

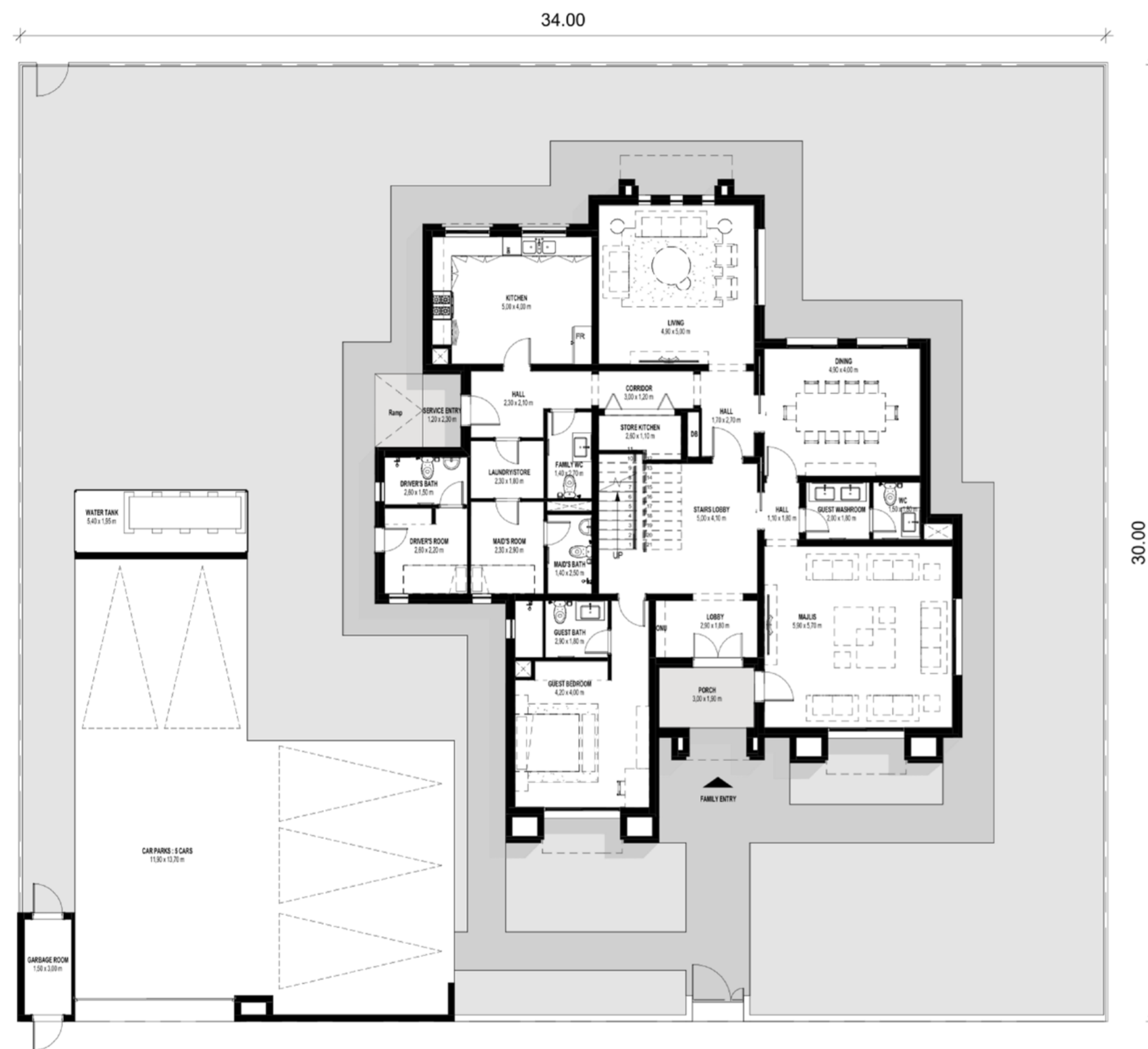


MEDITERRANEAN
5 BEDROOM



MODERN ARABIC
6 BEDROOM

MODERN ARABIC
6 BEDROOM + MAID'S ROOM
 INTERNAL SELLABLE AREA: **498 SQM** | BALCONY: **11 SQM**



GROUND FLOOR



FIRST FLOOR

Disclaimer: This plan is reproduced for illustrative purposes as an example of a typical plot layout and Aldar makes no representation of warranty in relation to any of the information shown.

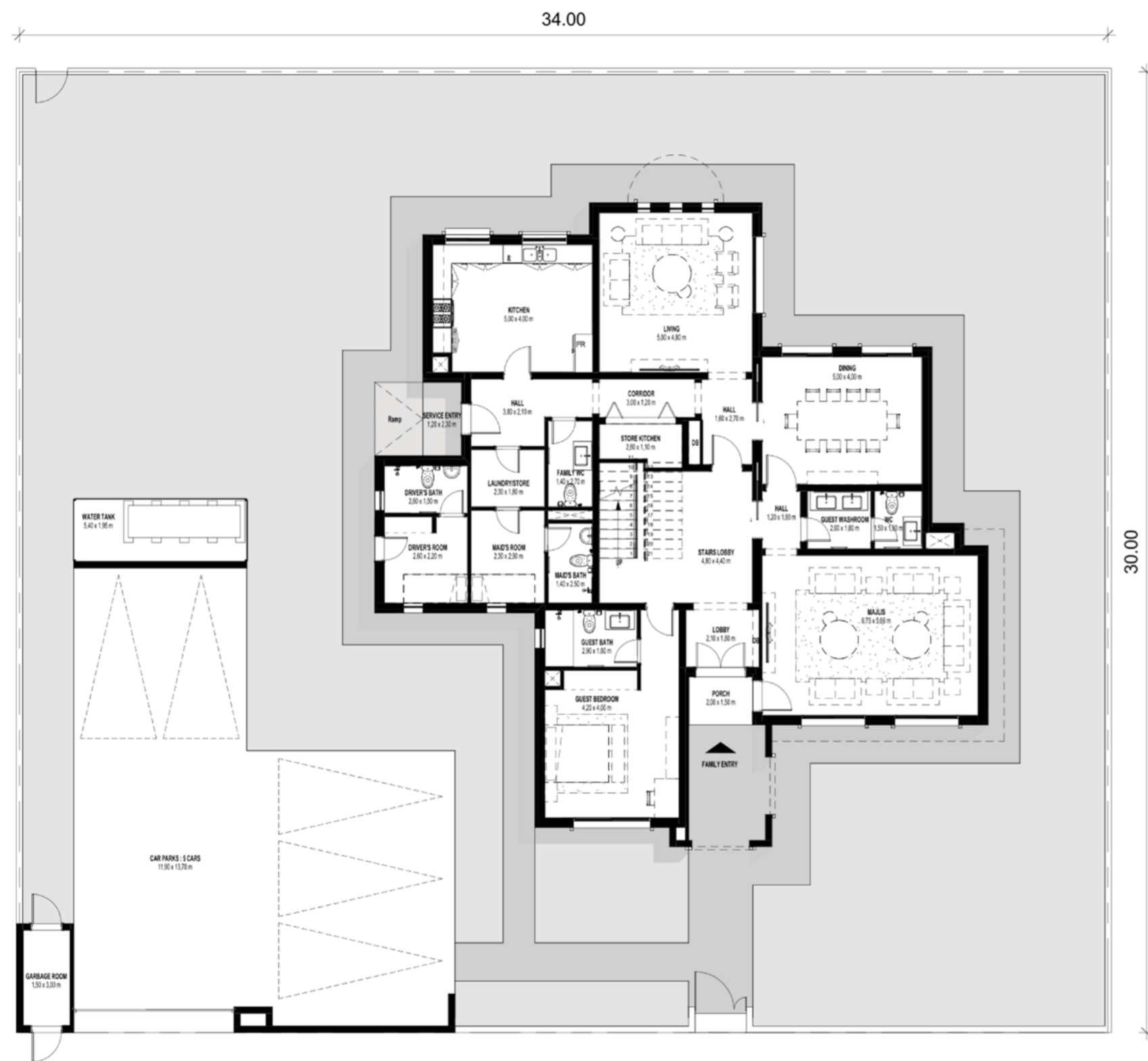


CONTEMPORARY
6 BEDROOM

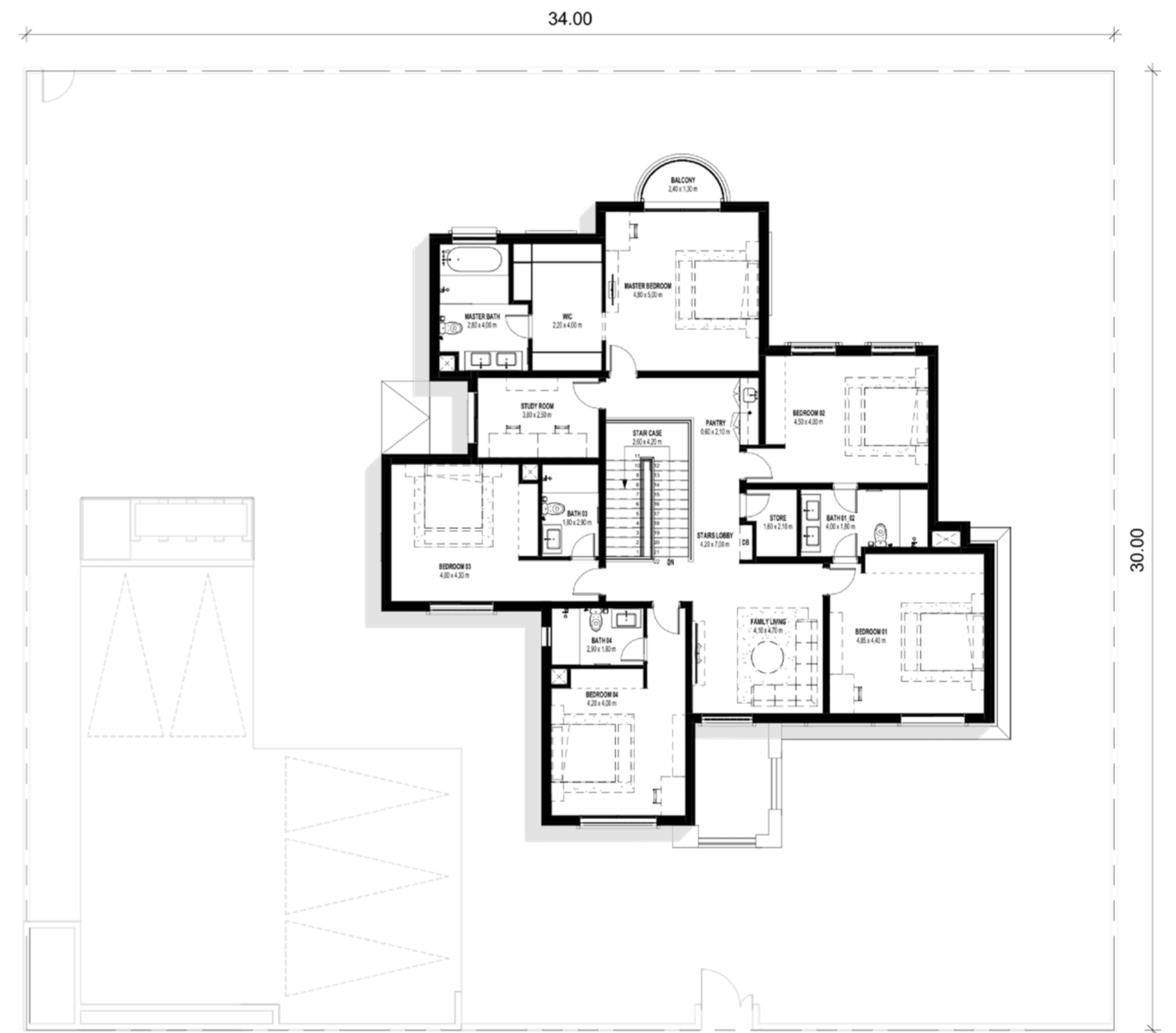


MEDITERRANEAN
6 BEDROOM

MEDITERRANEAN
6 BEDROOM + MAID'S ROOM
 INTERNAL SELLABLE AREA: **481 SQM** | BALCONY: **3.5 SQM**



GROUND FLOOR



FIRST FLOOR

Disclaimer: This plan is reproduced for illustrative purposes as an example of a typical plot layout and Aldar makes no representation of warranty in relation to any of the information shown.



A FAMILIAR FAMILY
FEELING MEETS
UNEXPECTED MOMENTS

WHERE MODERN
EMIRATI LIVING IS
WHAT YOU MAKE IT



STEP OUT OF YOUR
GARDEN AND INTO
THE PARK





215

FINISHES

THE FINISHING TOUCHES ARE YOURS TO DECIDE

NO HOME IS COMPLETE WITHOUT EXCEPTIONAL FINISHES, AND OURS ARE TAILORED TO YOUR PERSONALITY. CHOOSE FROM TASTEFULLY DARK OR REFRESHINGLY LIGHT, AND FROM STANDARD TO PREMIUM, AS YOU MAKE YOUR VILLA YOUR OWN.





STANDARD LIGHT



THROUGHOUT VILLA

INTERIOR DOORS & WARDROBES

Wood Melamine



GENERAL FLOORING

Porcelain Tile



GENERAL PAINTING

Emulsion Paint

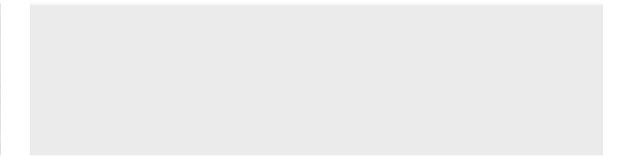


STAIRS

Porcelain Tile

WALL PAINTING

Emulsion Paint



KITCHEN & BATHROOMS

KITCHEN BACKSPLASH

Quartz

KITCHEN COUNTER TOP

Quartz



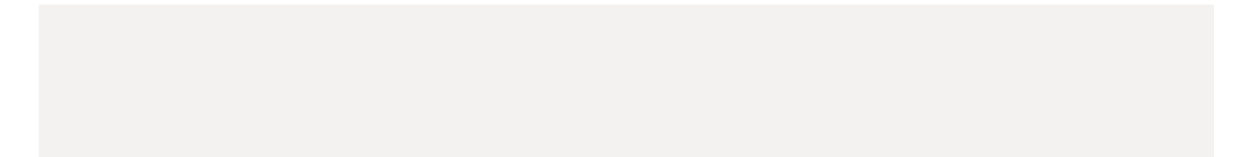
KITCHEN CABINETS UPPER UNITS

Wood Melamine



KITCHEN CABINETS LOWER UNITS

Wood Melamine



FLOORING

Porcelain Tile



BATHROOM WALL & FLOORING

Porcelain Tile



VANITY COUNTER TOP

Quartz





CHOOSE INTERIOR
FINISHES THAT
REFLECT YOU

STANDARD DARK



THROUGHOUT VILLA

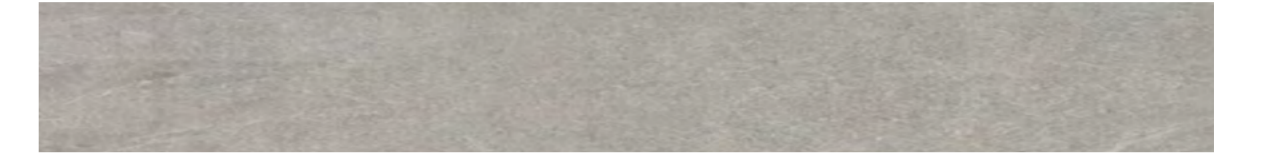
INTERIOR DOORS & WARDROBES

Wood Cladding



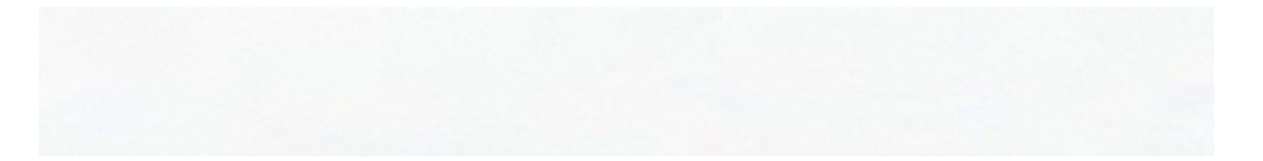
GENERAL FLOORING & STAIRS

Porcelain Tile



GENERAL PAINTING

Emulsion Paint



CEILING PAINTING

Emulsion Paint



KITCHEN & BATHROOMS

KITCHEN BACKSPLASH

Quartz

KITCHEN COUNTER TOP

Quartz



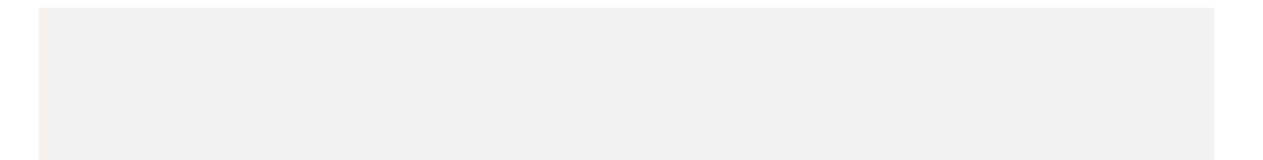
KITCHEN CABINETRY UPPER UNITS

Wood Melamine



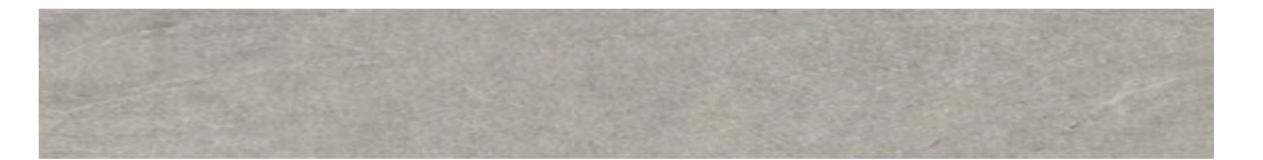
KITCHEN CABINETRY LOWER UNITS

Wood Melamine



KITCHEN FLOORING

Porcelain Tile

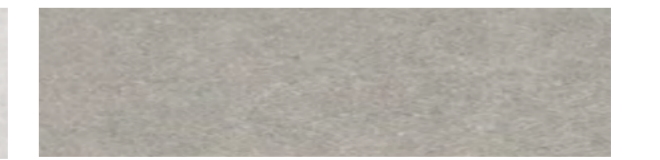


BATHROOM WALL

Porcelain Tile

BATHROOM FLOORING

Porcelain Tile



VANITY COUNTER TOP

Quartz



WHERE 'HOME'
IS DEFINED AND
DESIGNED BY YOU



PREMIUM LIGHT



THROUGHOUT VILLA

INTERIOR DOORS & WARDROBES

Wooden Veneer



GENERAL FLOORING & STAIRS

Porcelain Tile



GENERAL PAINTING

Emulsion Paint

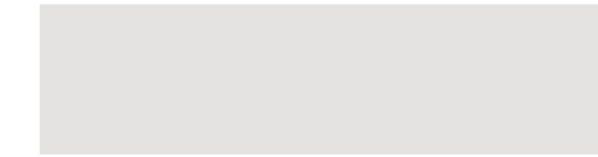


WALL PAINTING

Emulsion Paint

BEDROOM FLOORING

Engineered Parquet



KITCHEN & BATHROOMS

KITCHEN BACKSPLASH

Quartz

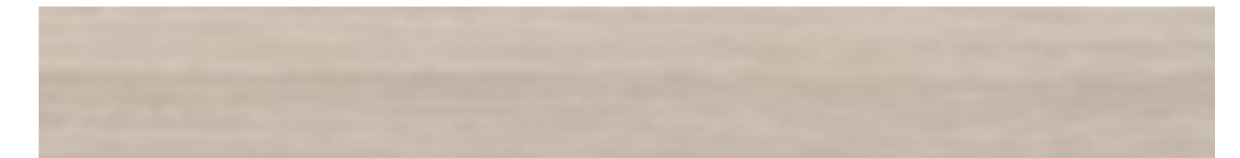
KITCHEN COUNTER TOP

Quartz



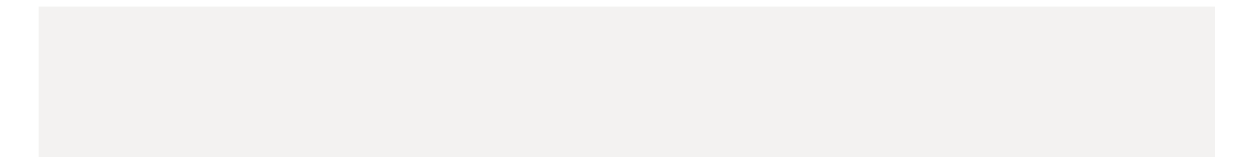
KITCHEN CABINETRY UPPER UNITS

Wood Melamine



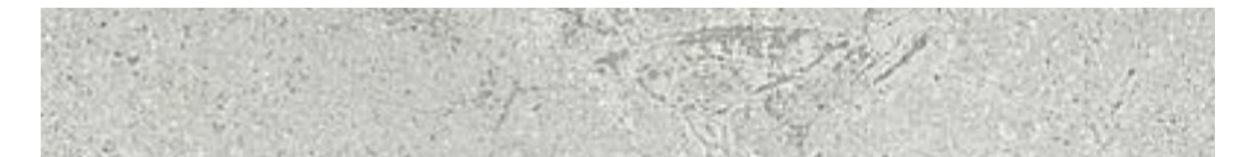
KITCHEN CABINETRY LOWER UNITS

Wood Melamine



FLOORING

Porcelain Tile



BATHROOM WALL & FLOORING

Porcelain Tile



VANITY COUNTER TOP

Quartz

VANITY UNIT

Wood Veneer



FINISHES DESIGNED
WITH TASTE



PREMIUM DARK



THROUGHOUT VILLA

INTERIOR DOORS & WARDROBES

Wood Veneer



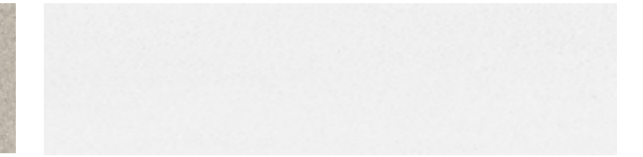
GENERAL FLOORING

Porcelain Tile



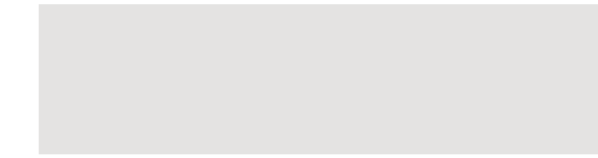
GENERAL PAINTING

Emulsion Paint



ACCENT WALL PAINTING

Emulsion Paint



STAIRS

Marble



BEDROOM FLOORING

Engineered Parquet



KITCHEN & BATHROOMS

KITCHEN BACKSPLASH

Quartz



KITCHEN COUNTER TOP

Quartz



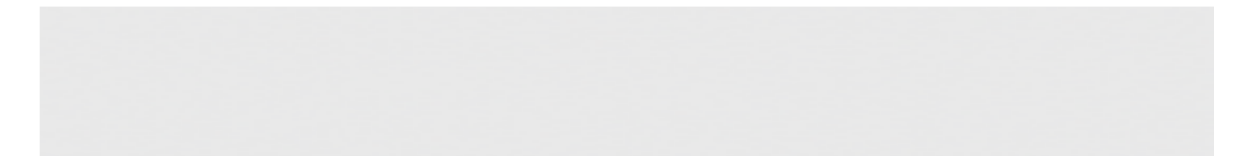
KITCHEN CABINERY UPPER UNITS

Wooden Cladding



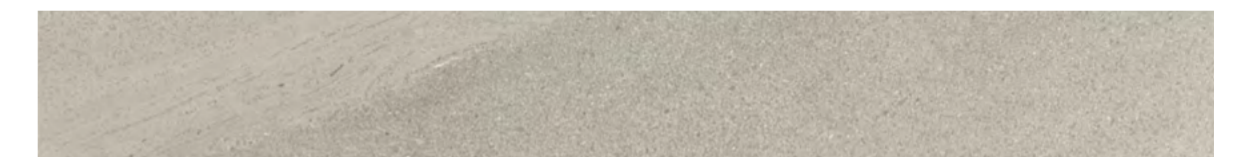
KITCHEN CABINERY LOWER UNITS

Wooden Cladding



FLOORING

Porcelain Tile



BATHROOM WALL

Porcelain Tile



BATHROOM FLOORING

Porcelain Tile



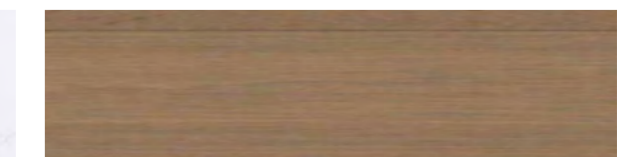
VANITY COUNTER TOP

Quartz



VANITY UNIT

Wooden Cladding





OWN A DREAM HOUSE
BUILT ACCORDING TO
YOUR DREAMS





PRECIOUS FAMILY
MOMENTS IN A VILLA
MADE FOR YOU

A COMMUNITY DESIGNED FOR CONVENIENCE

IN FAY ALREEMAN, THE WORLD OPENS UP TO YOUR WHIMS, WITH COMMUNITY FACILITIES FOR EVERY INTEREST AND ACTIVITY. GREEN SPACES AND KIDS PLAY AREAS ENRICH THE ATMOSPHERE, WHILE MULTI-PURPOSE COURTS AND A PEDESTRIAN AND CYCLE NETWORK INVIGORATE THE HEART.



MAKE MEMORIES IN
A HOME THAT MAKES
WISHES COME TRUE





SLIP INTO THE RHYTHM
OF THE COMMUNITY'S
HEARTBEAT



FEATURES

A HOME WITH EVERYTHING THAT MATTERS

FAMILY IS AT THE HEART OF **FAY ALREEMAN**, WITH DISTINGUISHED VILLAS DESIGNED TO OFFER SPACE AND PRIVACY, WHILE MEETING HIGH STANDARDS OF EFFICIENCY AND SUSTAINABILITY. AND WITH COMPREHENSIVE CUSTOMISATION OPTIONS, AS WELL AS PREMIUM UPGRADE PACKAGES, THESE ARE HOMES MADE PRECISELY FOR YOU.







PROPERTY FEATURES



PREMIUM UPGRADE
PACKAGES



UNIQUE CHOICE
OF EXTERIOR FACADES



RANGE OF
INTERIOR FINISHES



SUSTAINABLE
CONSTRUCTION
MATERIALS



EFFICIENT
WATER FIXTURES



FAMILY
ORIENTED



ESTIDAMA
PEARL 2 RATING

FAY ALREEMAN

ALDAR SQUARE

YAS ISLAND, NEXT TO YAS MALL, ABU DHABI

800 25327
SALES@ALDAR.COM

WORKING HOURS

MON-FRI
8:00 AM-4:00 PM

YAS SALES CENTRE

YAS ISLAND, NEXT TO YAS LINKS, ABU DHABI

800 25327
SALES@ALDAR.COM

WORKING HOURS

MON-FRI
8:00 AM-4:00 PM





ALDAR.COM
800 ALDAR