

FAY  
ALREEMAN  
— II —



# EVERYTHING WE DO COMES FROM THE HEART

As one of the most trusted and recognised real estate lifestyle developers in the UAE, it's our duty to make Abu Dhabi feel like home for everyone, every day. Which is why we do more than build properties. We strive to shape communities where people love to live, in homes that brim with everything they love.

---

REVENUE

**AED 8.58BN**  
FY 2021

---

INVESTMENT PORTFOLIO INCREASE

**AED 1BN**  
FY 2021

---

NET PROFIT

**AED 2.33BN**  
FY 2020

---

REVENUE SALES

**AED 7.2BN**  
FY 2021

---

NET PROFIT

**AED 841 M**  
Q2 2022

---

NET PROFIT

**AED 1.53 BN**  
H1 2022

---

GROUP SALES

**AED 3.12 BN**  
Q2 2022

---





# THIS IS ABU DHABI

The capital of the UAE, Abu Dhabi is a city with heart. A place that has drawn people from all over the world with its natural beauty, vibrant cultural scene, inspiring heritage and dynamic business landscape. A place that people love to call home.

# CONNECT TO THE WORLD FROM YOUR NEIGHBOURHOOD

Al Shamkha is a unique, self-sufficient residential neighbourhood, with easy access to the best of island and city living. Abu Dhabi International Airport lies just minutes from its driveways, while iconic destinations including Al Forsan International Sports Resort, Masdar City and Yas Island are only a short ride away.





# YAS ISLAND ATTRACTIONS ARE WAITING

## YAS LINKS GOLF CLUB, ABU DHABI

112 bunkers across an 18-hole course surrounded by mangroves; Yas Links is a beautiful waterfront challenge, whatever your handicap.

## YAS MALL, ABU DHABI

Shopping is just the beginning at Yas Mall. It's easy to spend the whole day enjoying its huge selection of restaurants, cafés, play centres and cinemas.



## W ABU DHABI, YAS MARINA

A luxury playground for the day or the weekend, right at the buzzing heart of Yas Island.

AL FORSAN INTERNATIONAL  
SPORTS RESORT

From horse riding and water skiing, to archery and race car driving, there's something for every intrepid adventurer.





# A COMMUNITY CREATED AROUND YOU

Alreeman at the heart of Al Shamkha is a community with personality. Live out your dream life, with courts and tracks for the more active residents. Parks, playgrounds and schools for growing families. As well as mosques, community centres and more, all designed to bring people together.



# TAKE YOUR PLACE

A warm welcome to Fay Alreeman II. A community open to everyone. Start a family, bond with new friends, find a hobby, perfect a skill. With spacious homes, plenty of green space and all the entertainment and amenities you could need, it's the ideal place for life to unfold.

4-BED VILLA





EVERYTHING YOU LOVE, IN ONE COMMUNITY

ENTERTAIN THE NEIGHBOURHOOD  
IN YOUR OWN BACKYARD



SPACE FOR ALL OF LIFE'S SPECIAL MOMENTS



COME TOGETHER  
WITH LOVED ONES UNDER THE STARS





# YOUR PLACE TO BELONG

People of every nationality, culture and belief are welcomed here; and their passions are too. Whether yours is a love of running, of shopping, of coffee, or of trying new things, the community caters to your every whim, with facilities and activities to suit all interests.

# KIDS PLAY AREA

If it's fun you're after, head to the swings, slides, roundabouts and adventure of the park.



## GREEN SPACES

Get together for a walk in nature, a picnic on the grass, or a friendly game of football on the green.

## RUNNING & CYCLING TRACK

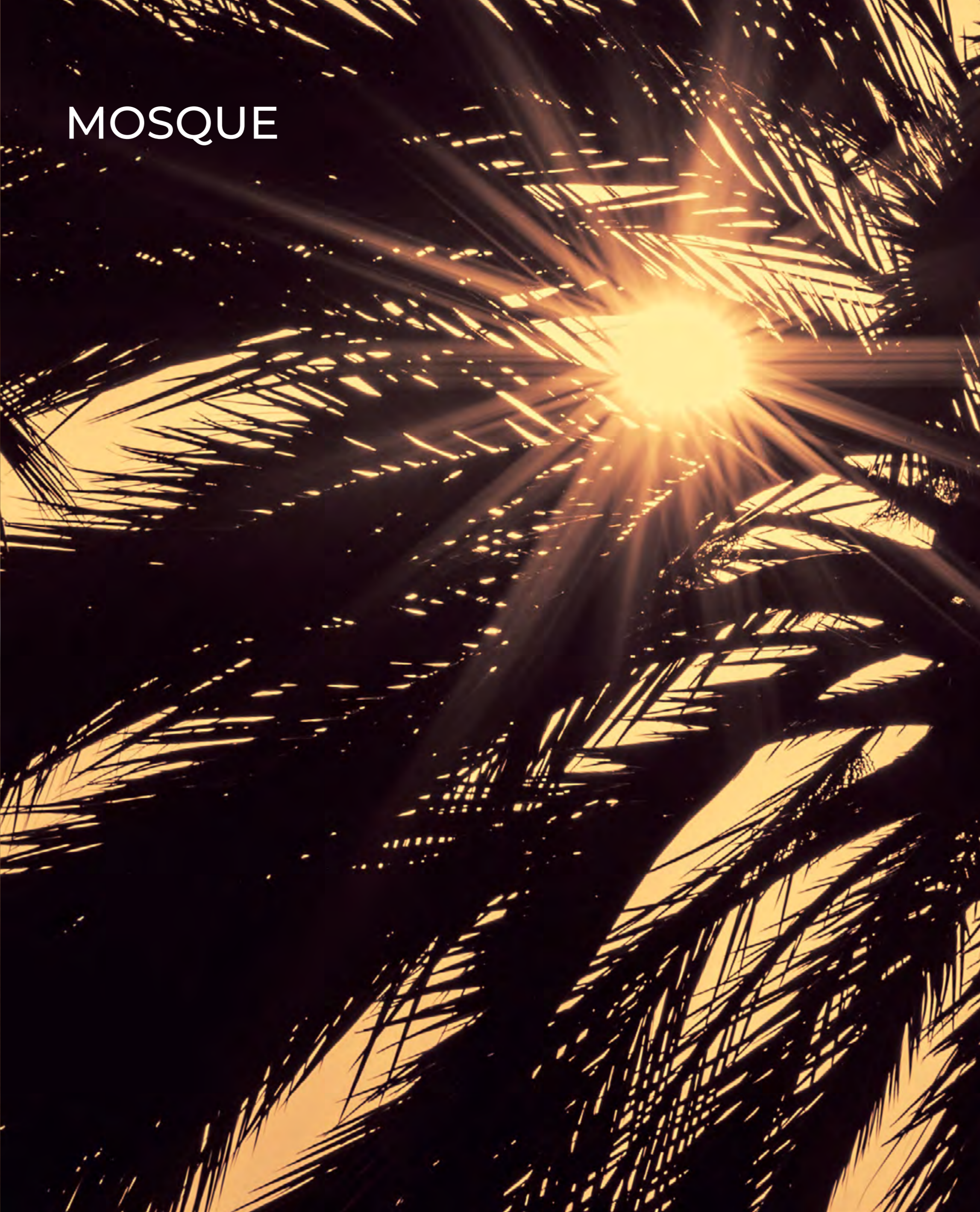
Explore the network of exercise tracks, perfect for powering up the legs or pumping the pedals.

# RETAIL

Browse the retail outlet at the heart of the community.



# MOSQUE



ENJOY EXCLUSIVE  
ACCESS TO MODERN  
AMENITIES

---

MULTIPURPOSE SPORTS COURTS

---

KIDS PLAY AREA

---

GREEN SPACES

---

COMMUNITY RETAIL OUTLET

---

RUNNING & CYCLING TRACK

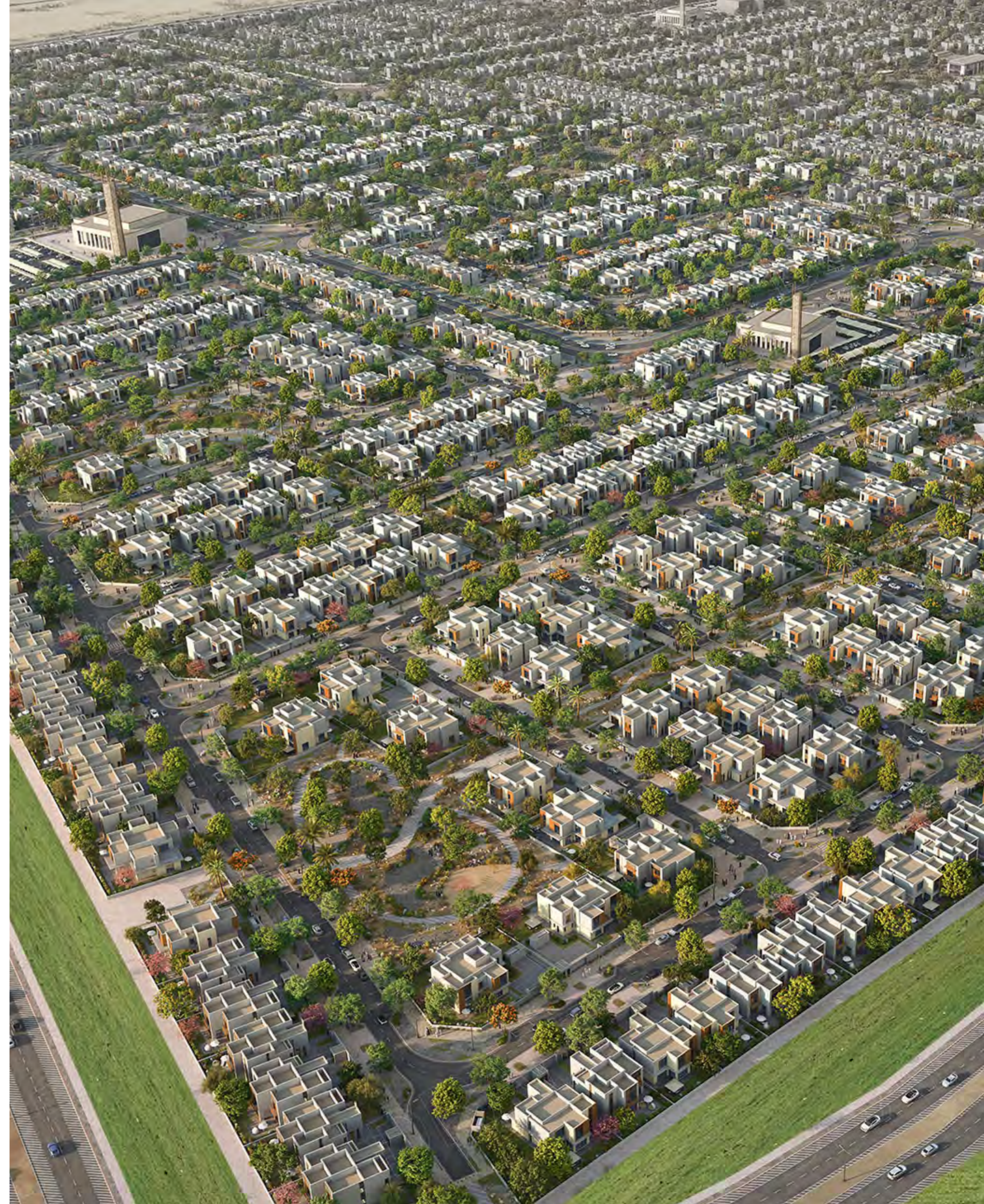
---

MOSQUES

---

SCHOOL

---



# THE PERFECT FIT

Own the home you'd always imagined, with a choice of villa facades, dark or light interior colour schemes and the option to upgrade to premium finishes. An indoor and an outdoor majlis, spacious rooms and friendly neighbours come as standard.





A HOME DESIGNED FOR YOU, BY YOU

# STANDARD LIGHT



INTERIOR DOORS & WARDROBES

Wood Cladding



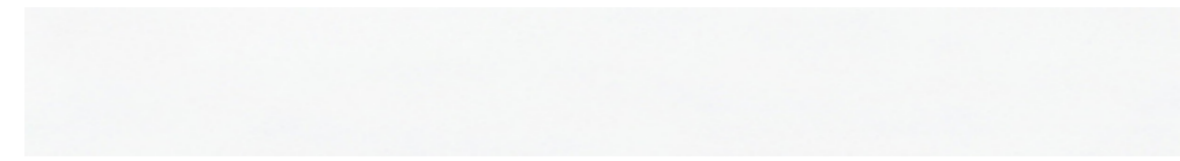
GENERAL FLOORING & STAIRS

Porcelain Tile



GENERAL PAINTING

Emulsion Paint



CEILING PAINTING

Emulsion Paint



KITCHEN BACKSPLASH

Quartz

KITCHEN COUNTER TOP

Quartz



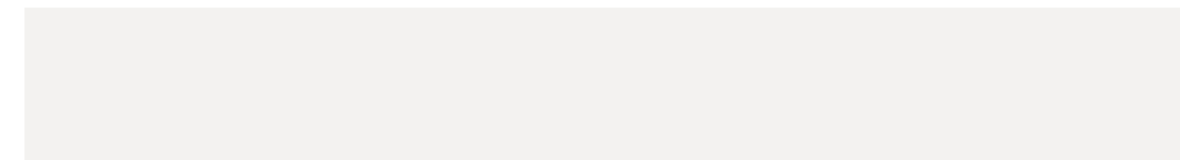
KITCHEN CABINETRY UPPER UNITS

Wood Melamine



KITCHEN CABINETRY LOWER UNITS

Wood Melamine



KITCHEN FLOORING

Porcelain Tile



BATHROOM WALL

Porcelain Tile

BATHROOM FLOORING

Porcelain Tile



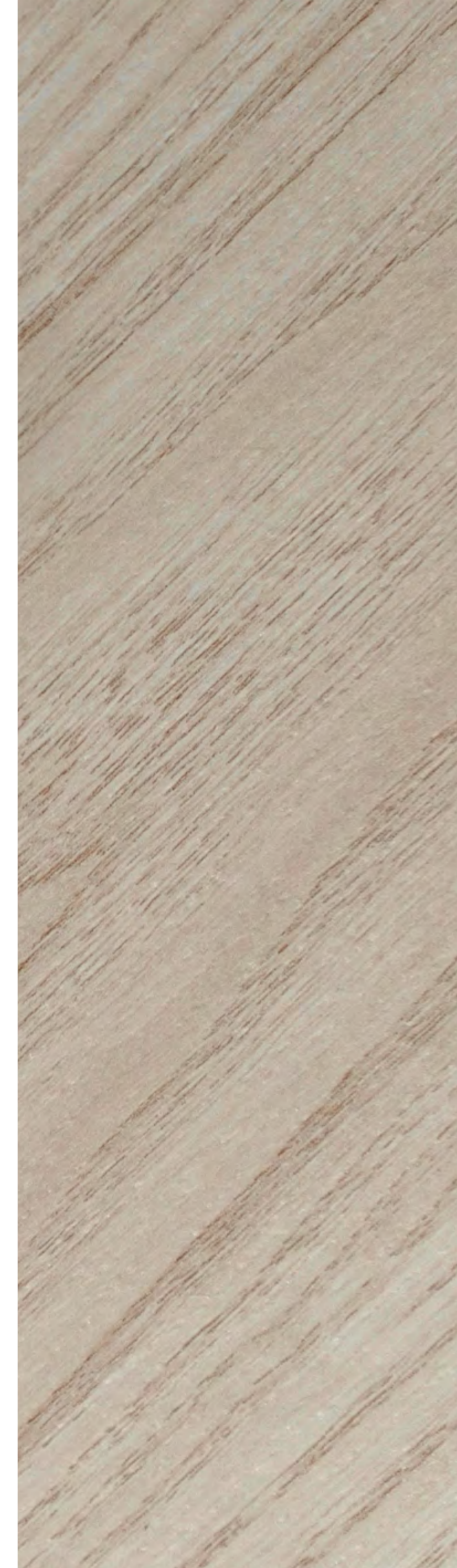
VANITY COUNTER TOP

Quartz



THROUGHOUT VILLA

KITCHEN & BATHROOMS



# STANDARD DARK



INTERIOR DOORS & WARDROBES

Wood Melamine



GENERAL FLOORING

Porcelain Tile



GENERAL PAINTING

Emulsion Paint

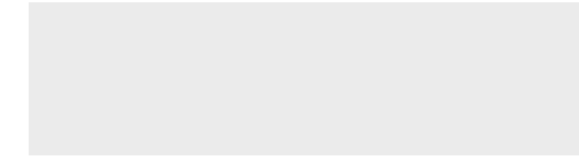


STAIRS

Porcelain Tile

WALL PAINTING

Emulsion Paint

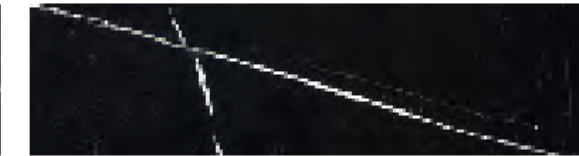


KITCHEN BACKSPLASH

Quartz

KITCHEN COUNTER TOP

Quartz



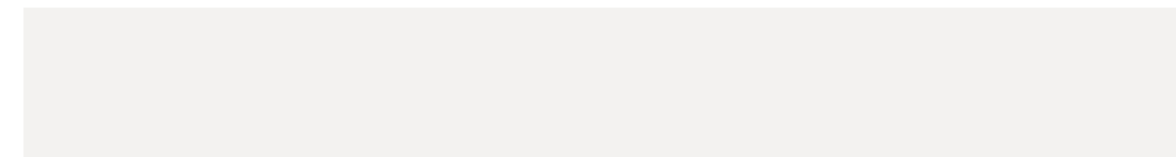
KITCHEN CABINETRY UPPER UNITS

Wood Melamine



KITCHEN CABINETRY LOWER UNITS

Wood Melamine



FLOORING

Porcelain Tile



BATHROOM WALL & FLOORING

Porcelain Tile



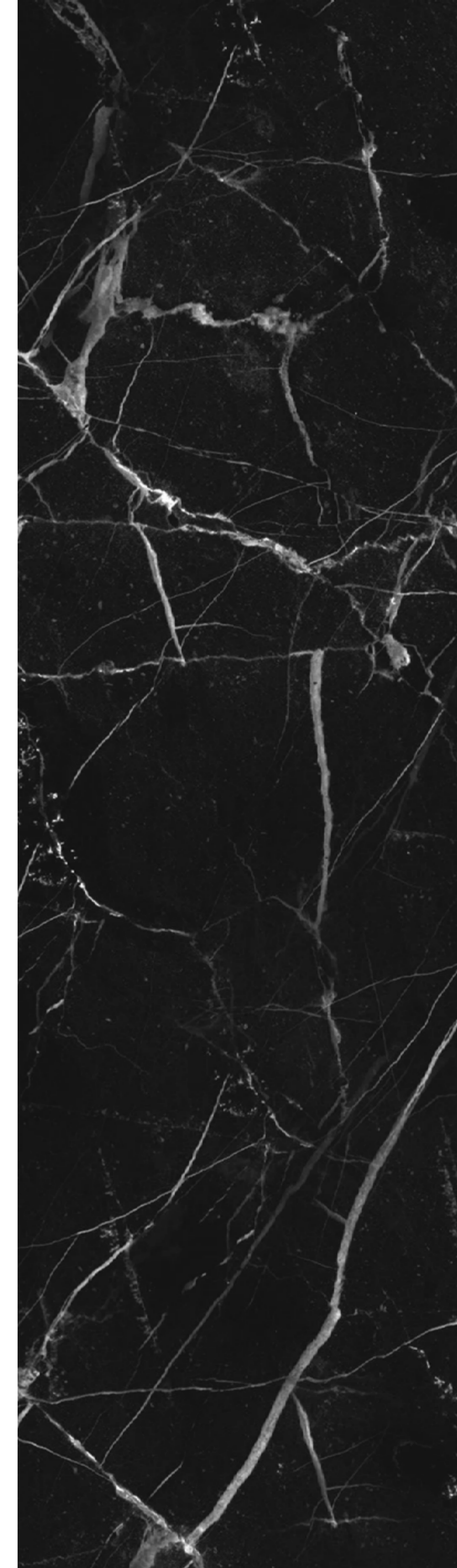
VANITY COUNTER TOP

Quartz



THROUGHOUT VILLA

KITCHEN & BATHROOMS



# PREMIUM LIGHT



## INTERIOR DOORS & WARDROBES

Wooden Veneer



## GENERAL FLOORING & STAIRS

Porcelain Tile



## GENERAL PAINTING

Emulsion Paint



## WALL PAINTING

Emulsion Paint



## BEDROOM FLOORING

Engineered Parquet



## KITCHEN BACKSPLASH

Quartz



## KITCHEN COUNTER TOP

Quartz



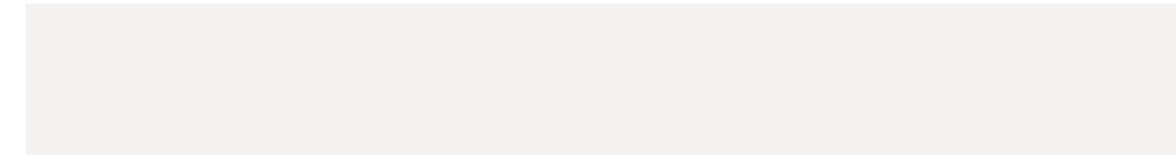
## KITCHEN CABINETRY UPPER UNITS

Wood Melamine



## KITCHEN CABINETRY LOWER UNITS

Wood Melamine



## FLOORING

Porcelain Tile



## BATHROOM WALL & FLOORING

Porcelain Tile



## VANITY COUNTER TOP

Quartz



## VANITY UNIT

Wood Veneer



THROUGHOUT VILLA

KITCHEN & BATHROOMS



# PREMIUM DARK



## INTERIOR DOORS & WARDROBES

Wood Veneer



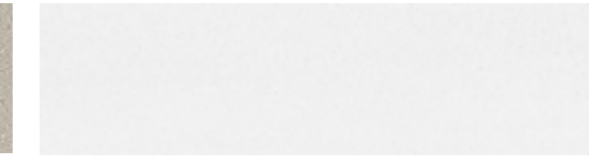
## GENERAL FLOORING

Porcelain Tile



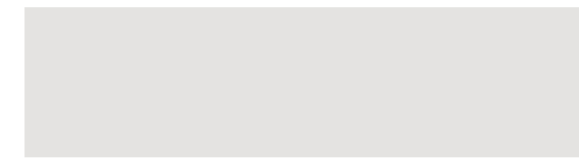
## GENERAL PAINTING

Emulsion Paint



## ACCENT WALL PAINTING

Emulsion Paint



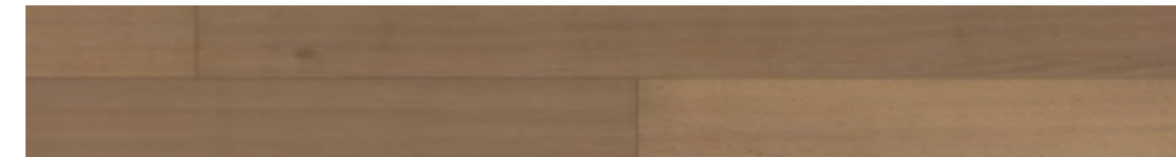
## STAIRS

Marble



## BEDROOM FLOORING

Engineered Parquet



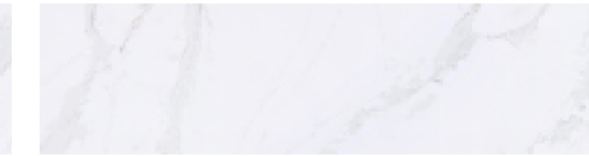
## KITCHEN BACKSPLASH

Quartz



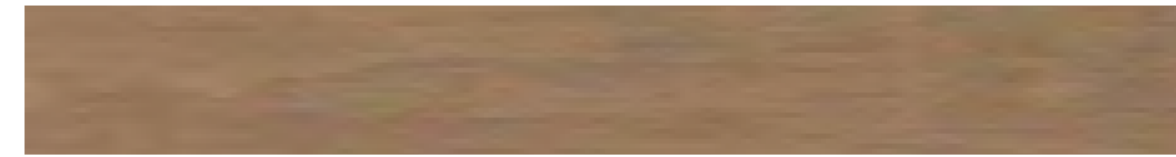
## KITCHEN COUNTER TOP

Quartz



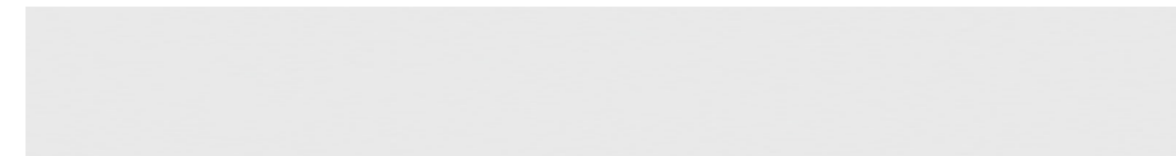
## KITCHEN CABINETRY UPPER UNITS

Wooden Cladding



## KITCHEN CABINETRY LOWER UNITS

Wooden Cladding



## FLOORING

Porcelain Tile



## BATHROOM WALL

Porcelain Tile



## BATHROOM FLOORING

Porcelain Tile



## VANITY COUNTER TOP

Quartz



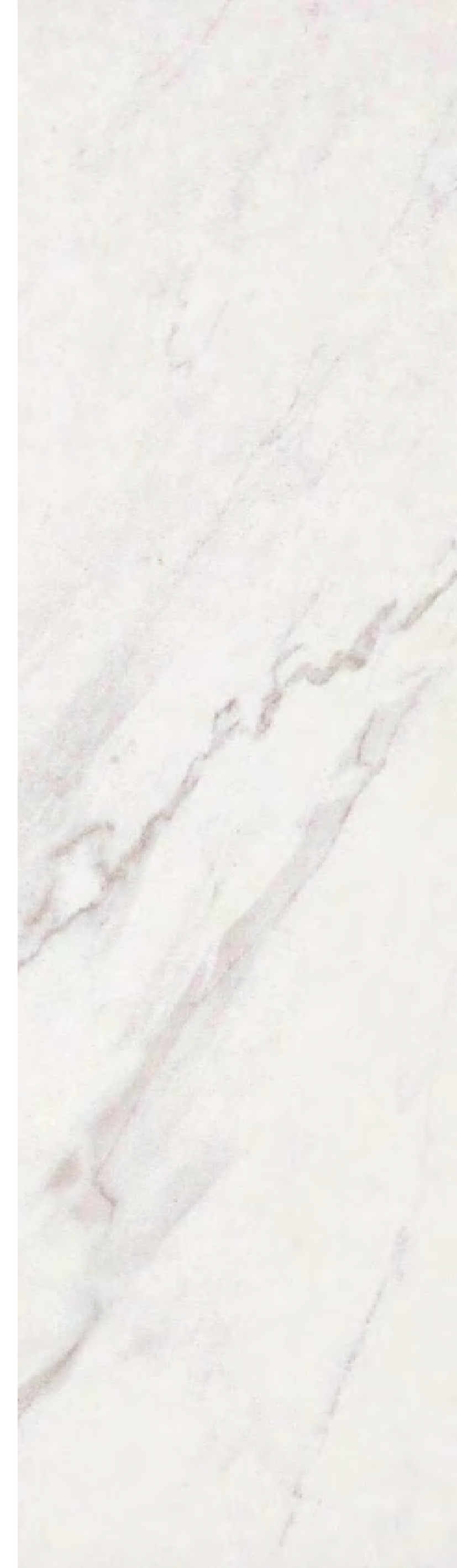
## VANITY UNIT

Wooden Cladding



THROUGHOUT VILLA

KITCHEN & BATHROOMS



UNWIND IN YOUR SOOTHING SANCTUARY



# PROPERTY FEATURES



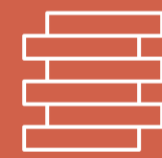
PREMIUM UPGRADE  
PACKAGES



UNIQUE CHOICE  
OF EXTERIOR FACADES



RANGE OF  
INTERIOR FINISHES



SUSTAINABLE  
CONSTRUCTION  
MATERIALS



EFFICIENT  
WATER FIXTURES



FAMILY  
ORIENTED



ESTIDAMA  
PEARL 2 RATING



# FEEL RIGHT AT HOME

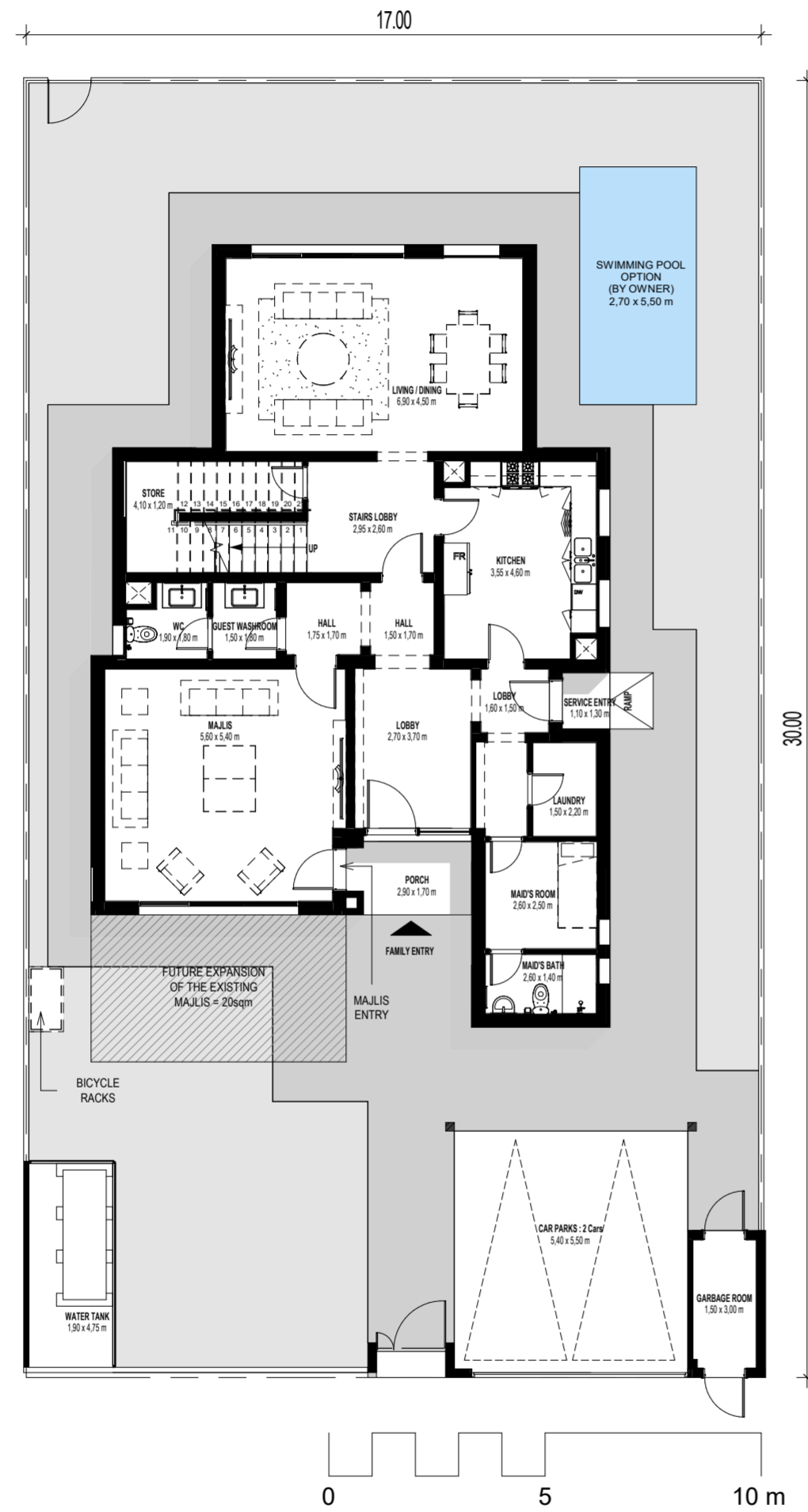
Choose from 3 to 6-bed villas with a choice of facades, and give your family all the space they need to grow and thrive.



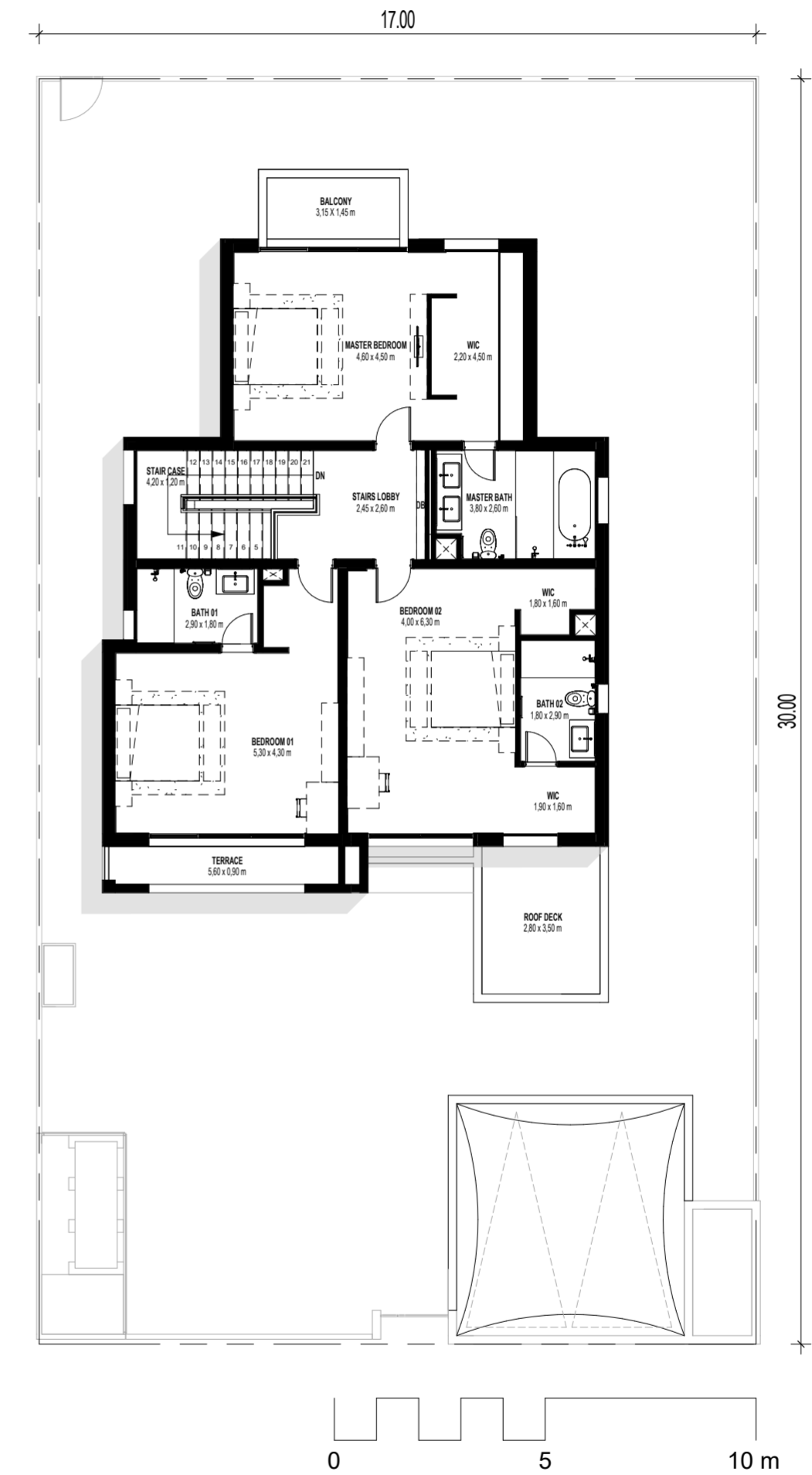
WHERE YOUR DREAM LIFE WILL UNFOLD



# VILLA TYPE 1 / 3 BEDROOM



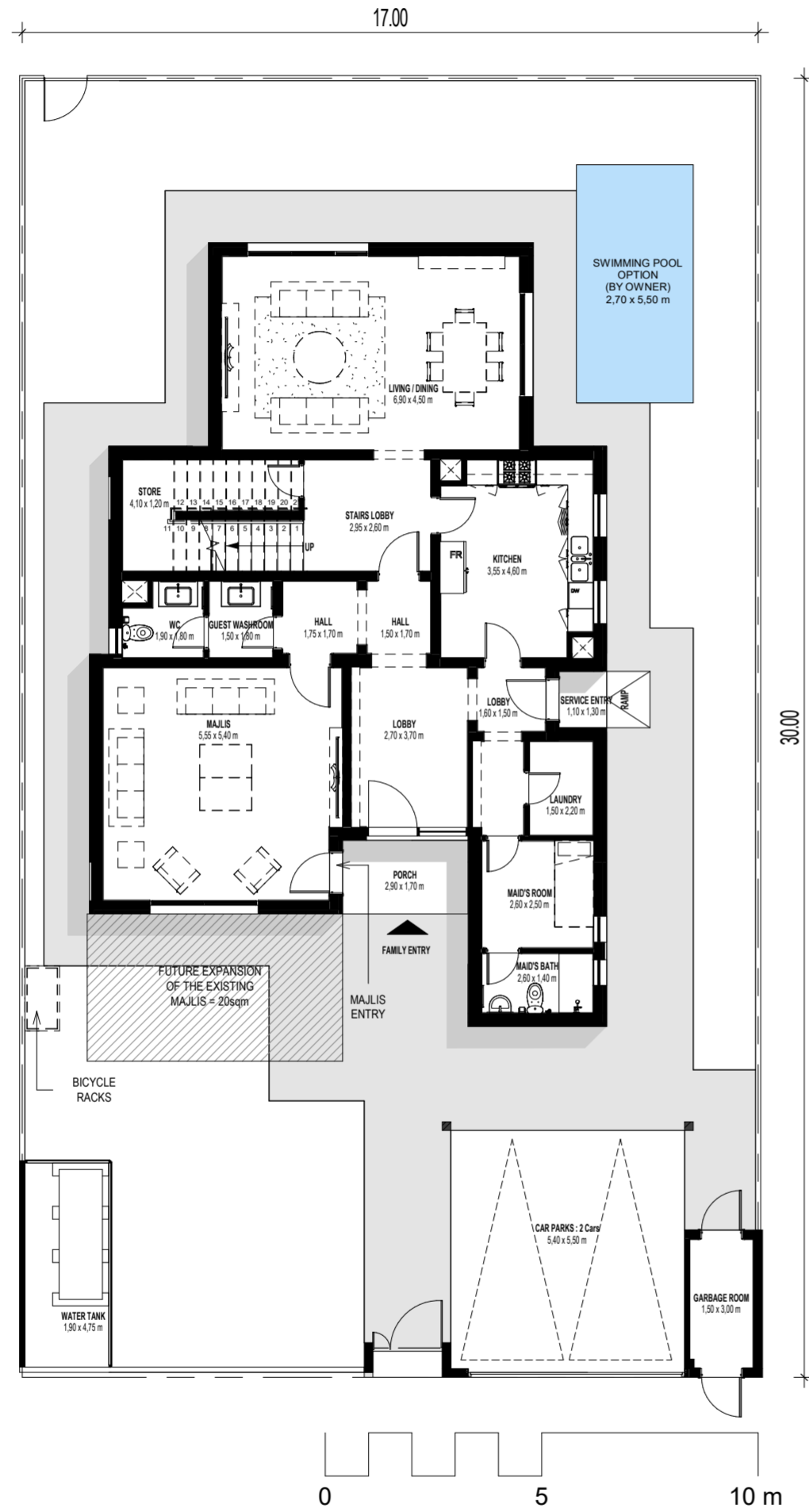
GROUND FLOOR



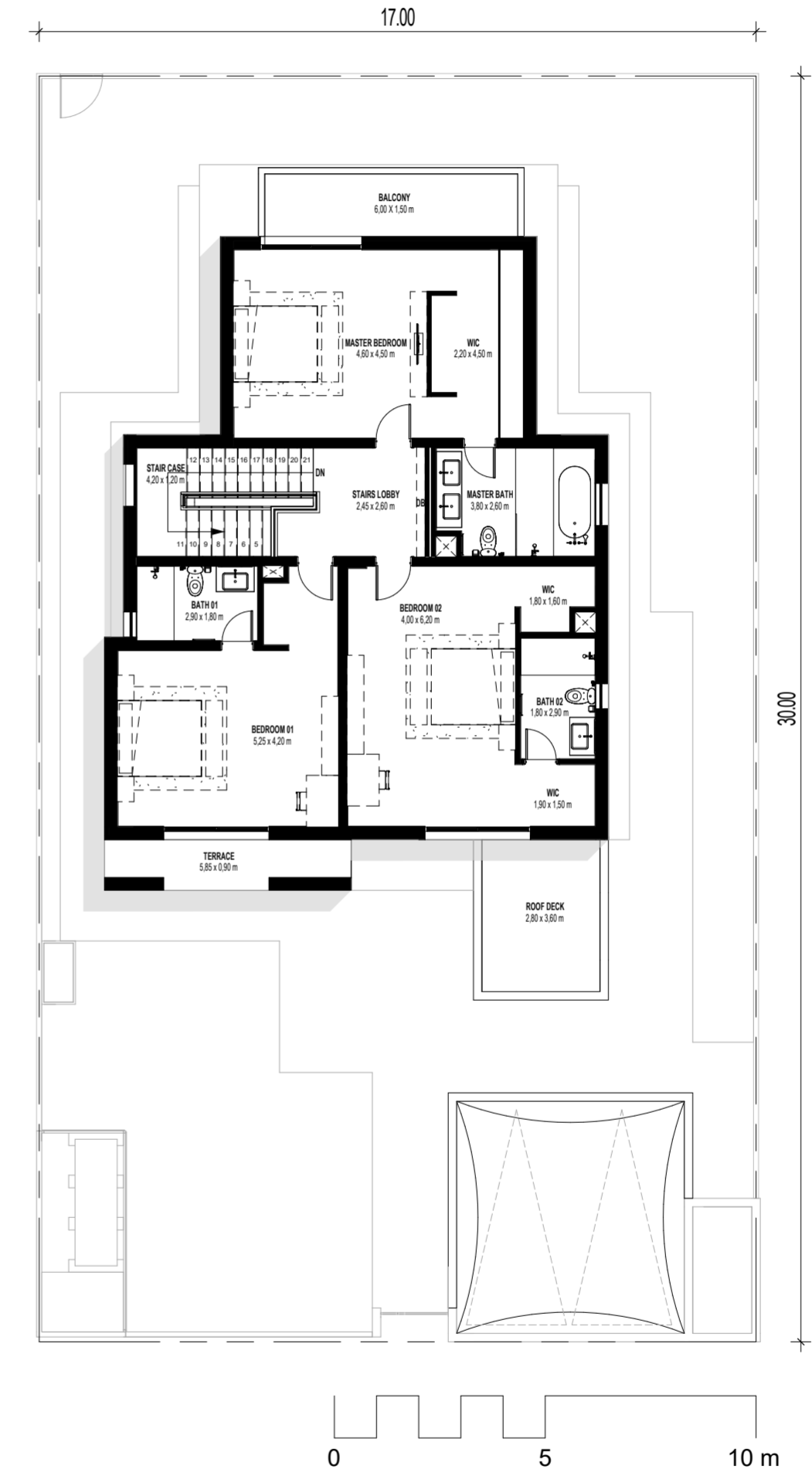
FIRST FLOOR

Disclaimer: This plan is reproduced for illustrative purposes as an example of a typical plot layout and Aldar makes no representation of warranty in relation to any of the information shown.

# VILLA TYPE 2 / 3 BEDROOM



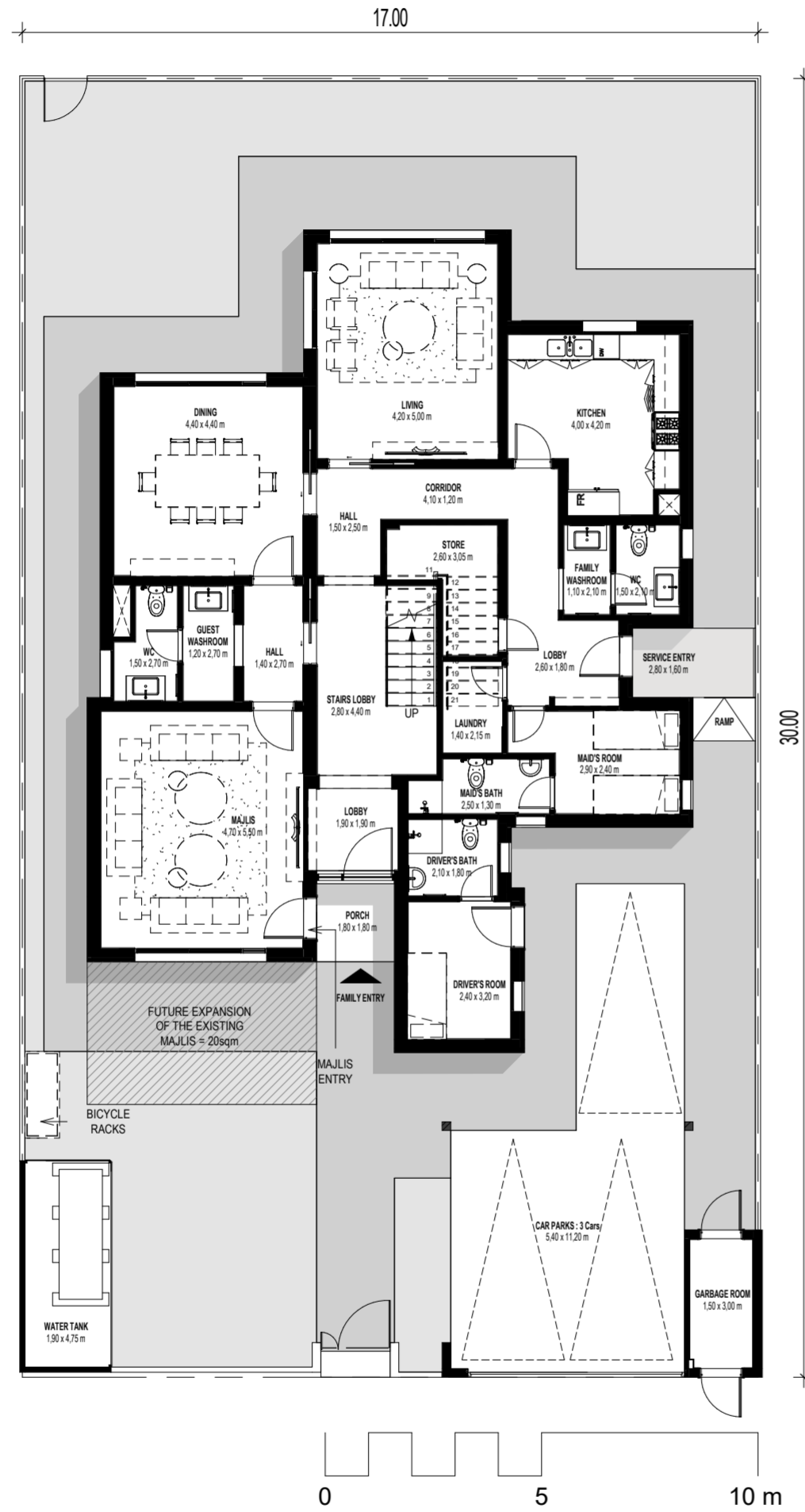
GROUND FLOOR



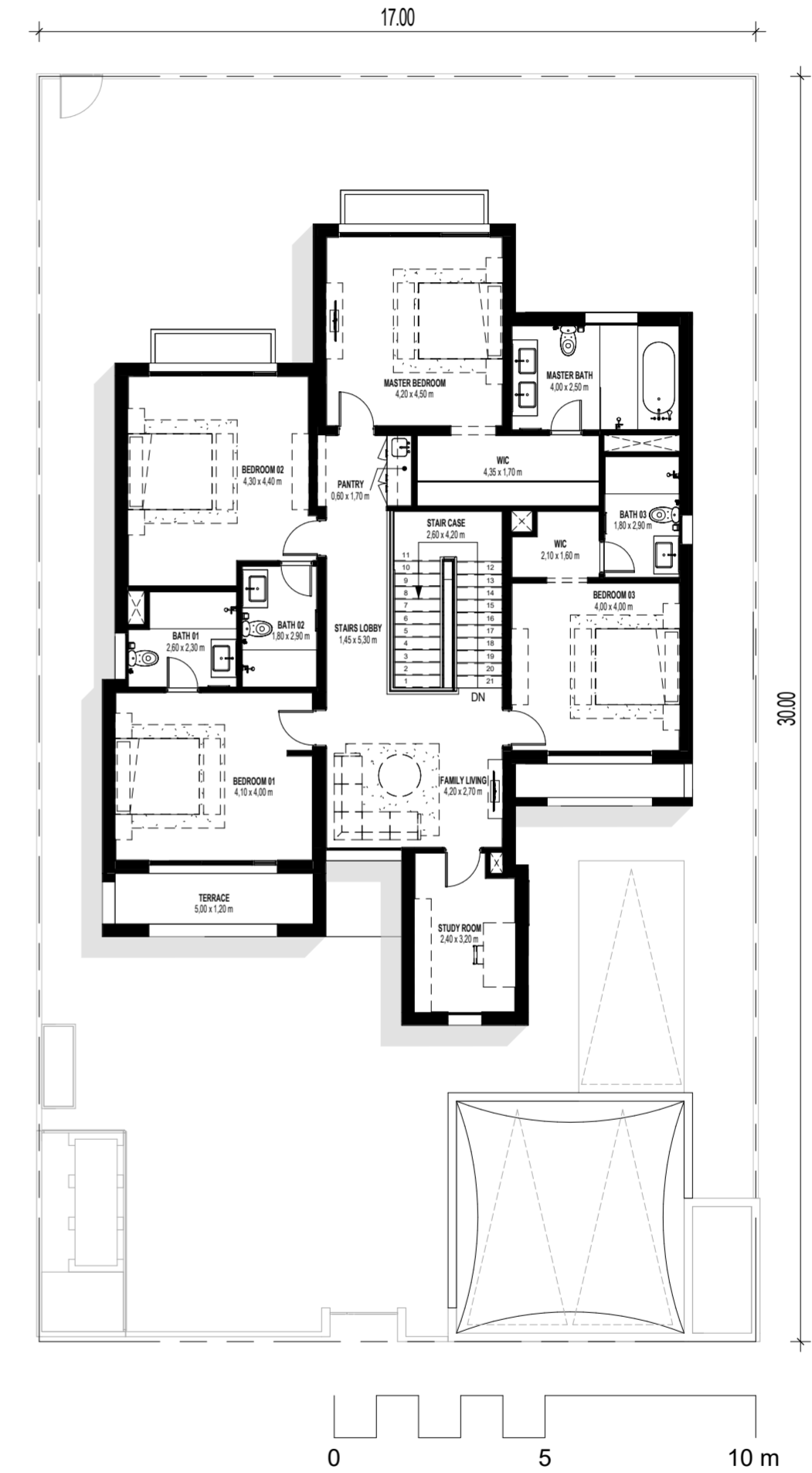
FIRST FLOOR

Disclaimer: This plan is reproduced for illustrative purposes as an example of a typical plot layout and Aldar makes no representation of warranty in relation to any of the information shown.

# VILLA TYPE 1 / 4 BEDROOM



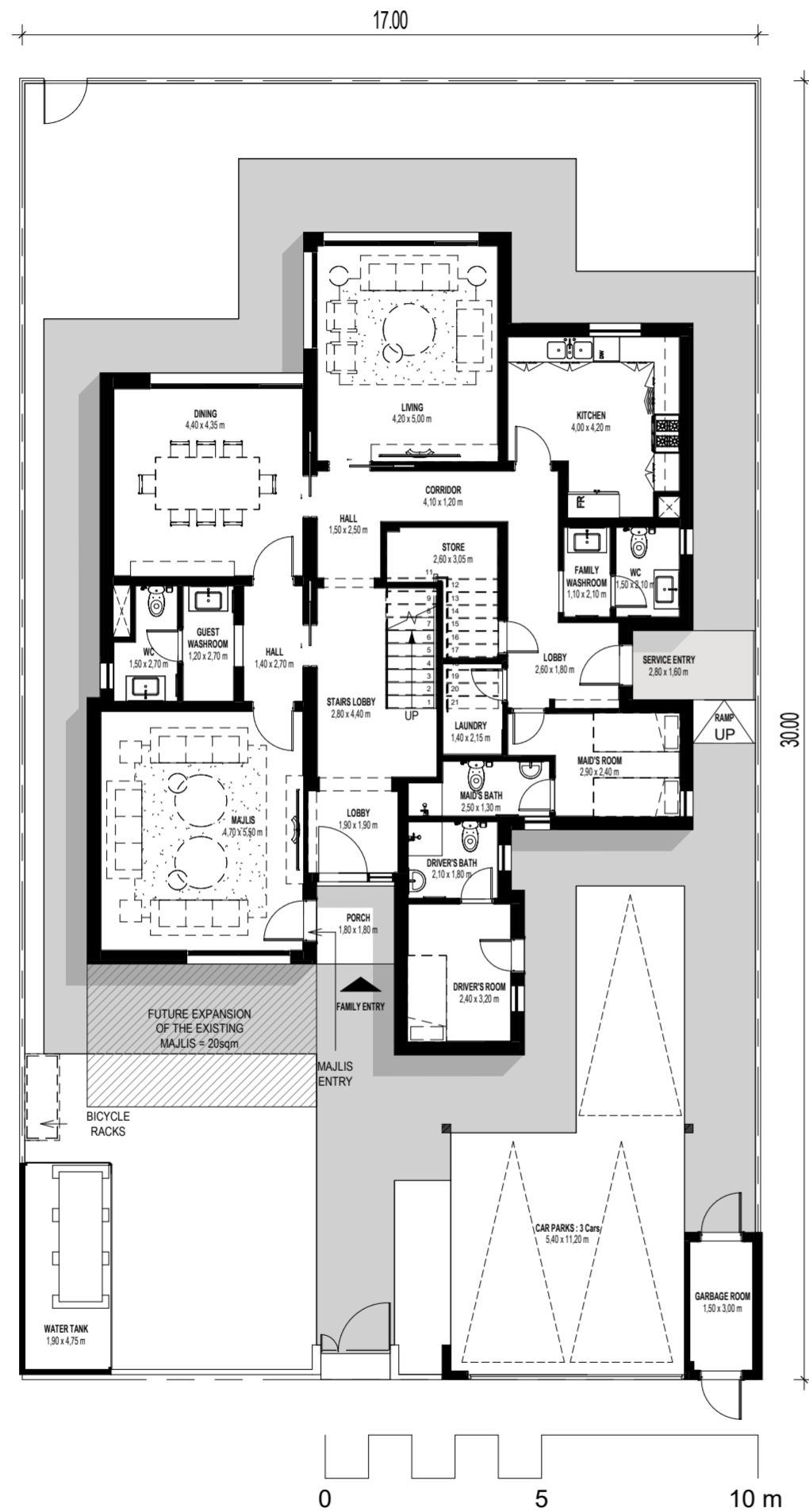
GROUND FLOOR



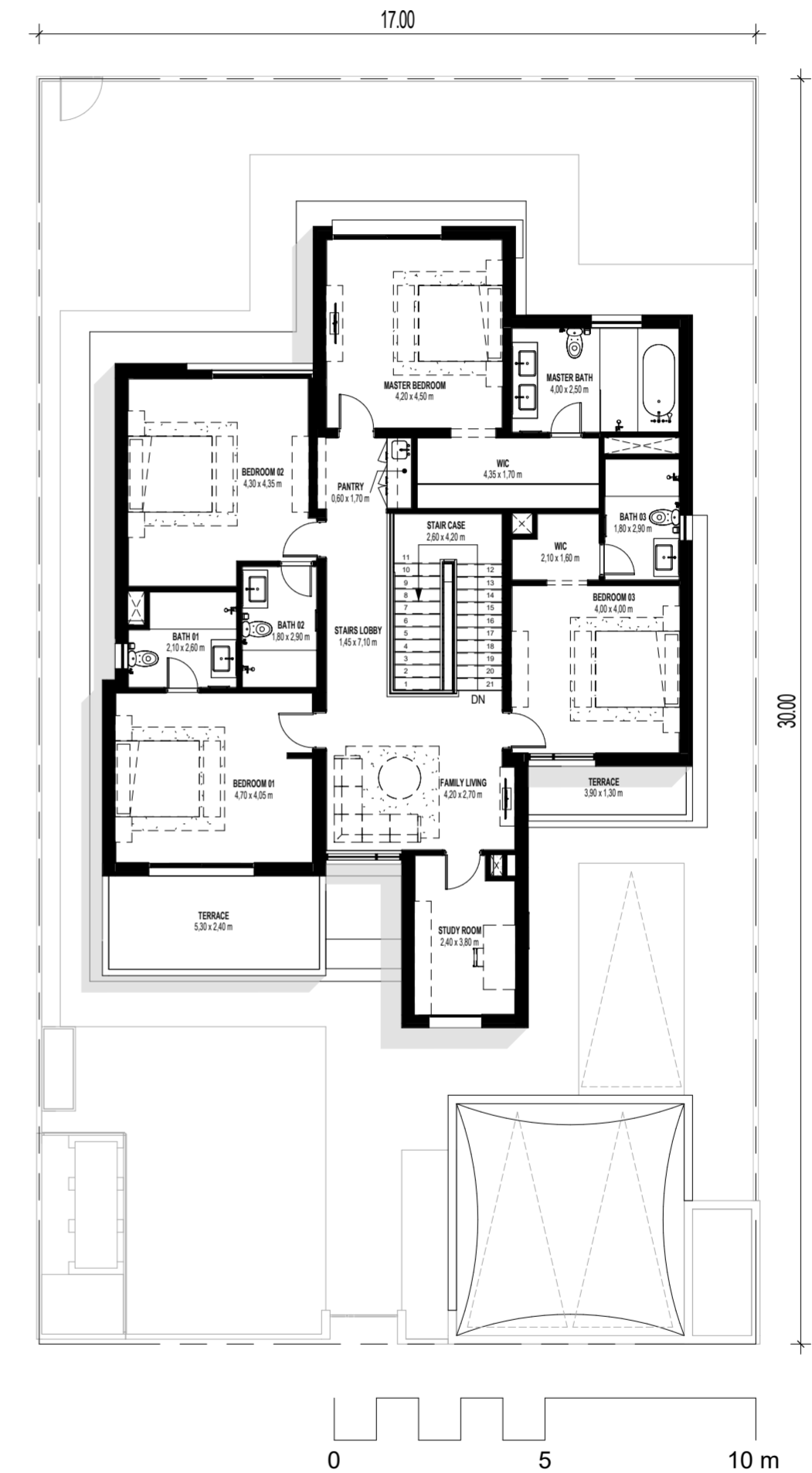
FIRST FLOOR

Disclaimer: This plan is reproduced for illustrative purposes as an example of a typical plot layout and Aldar makes no representation of warranty in relation to any of the information shown.

# VILLA TYPE 2 / 4 BEDROOM



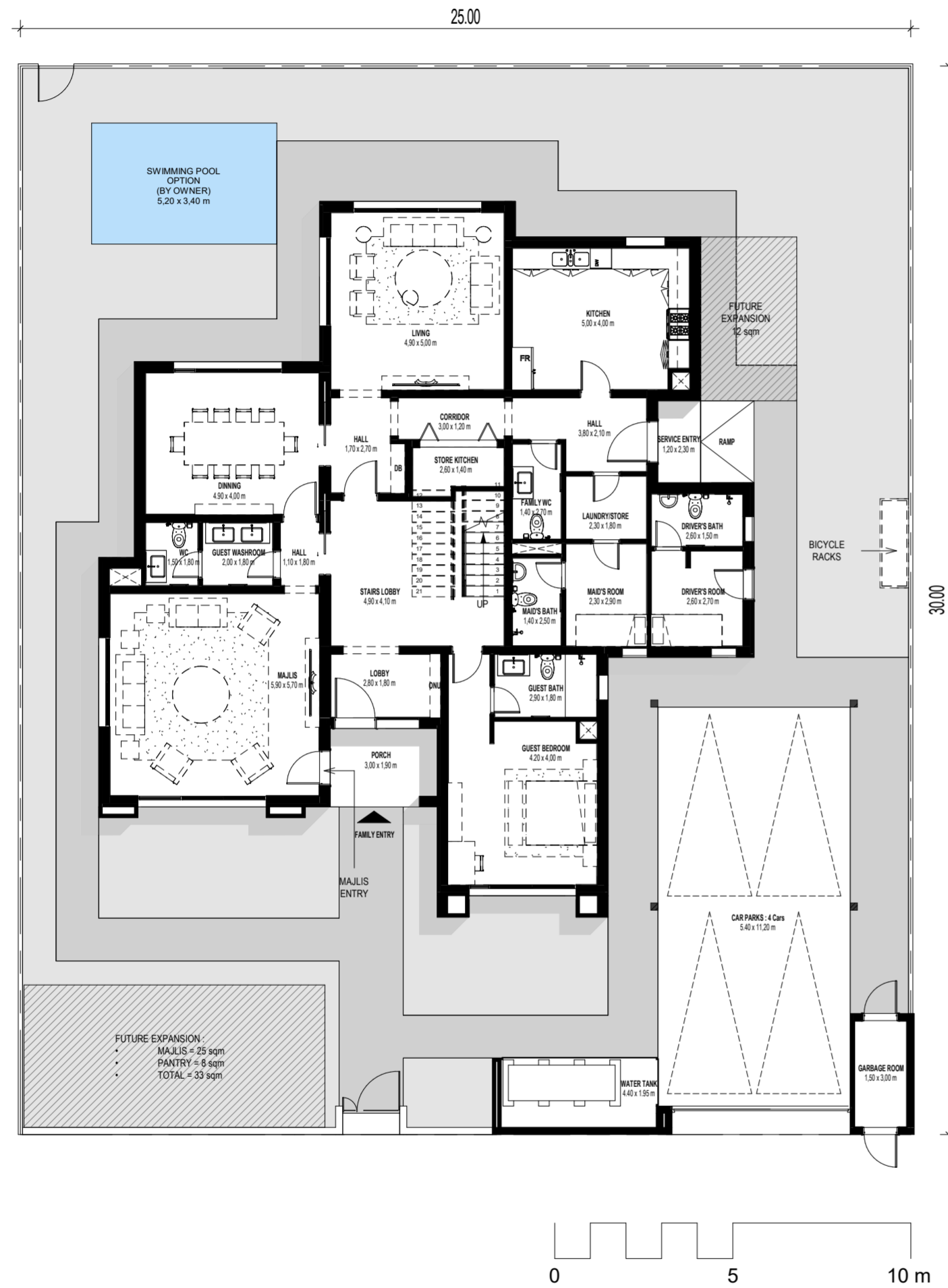
GROUND FLOOR



FIRST FLOOR

Disclaimer: This plan is reproduced for illustrative purposes as an example of a typical plot layout and Aldar makes no representation of warranty in relation to any of the information shown.

# VILLA TYPE 1 / 5 BEDROOM



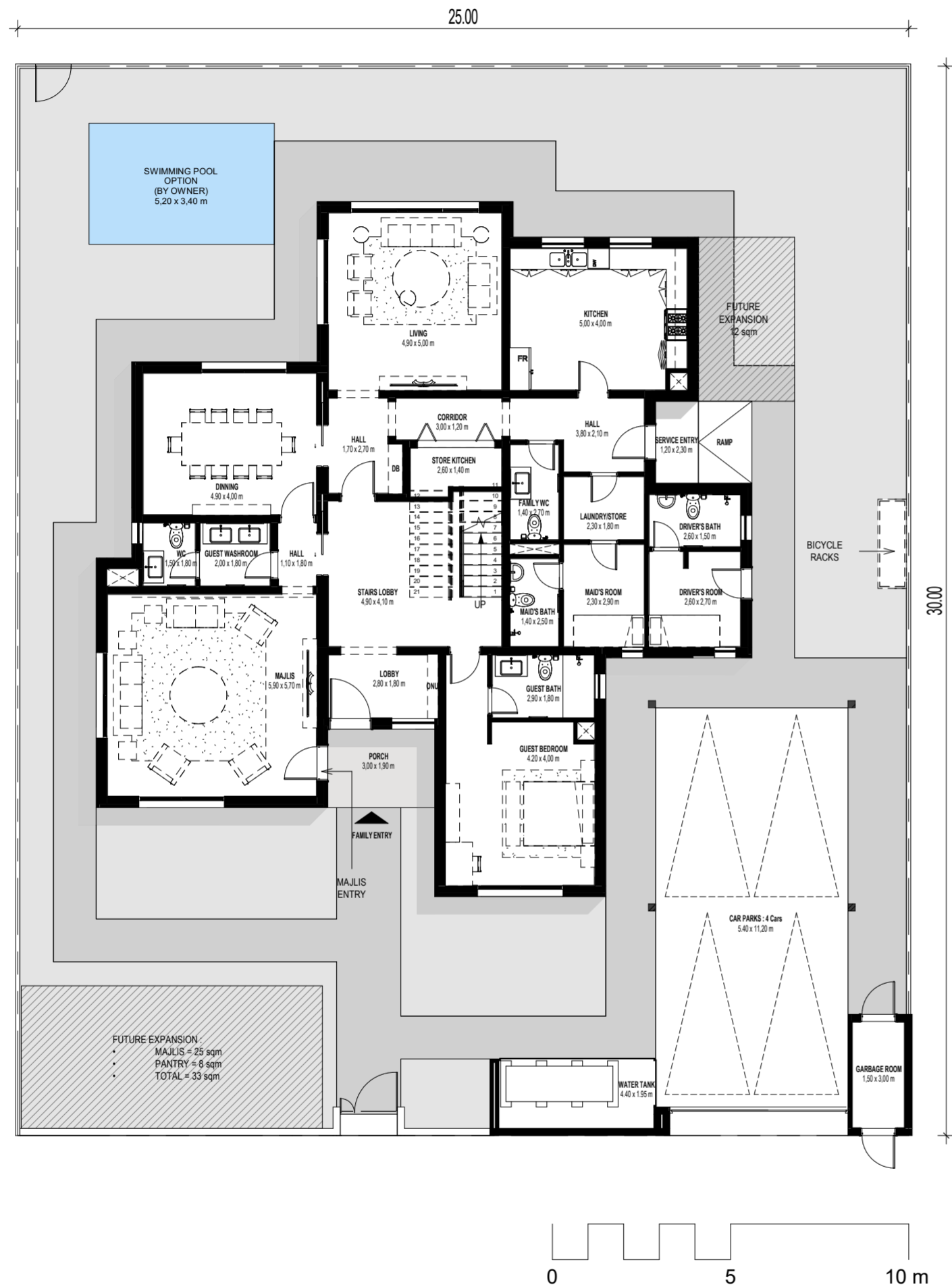
GROUND FLOOR



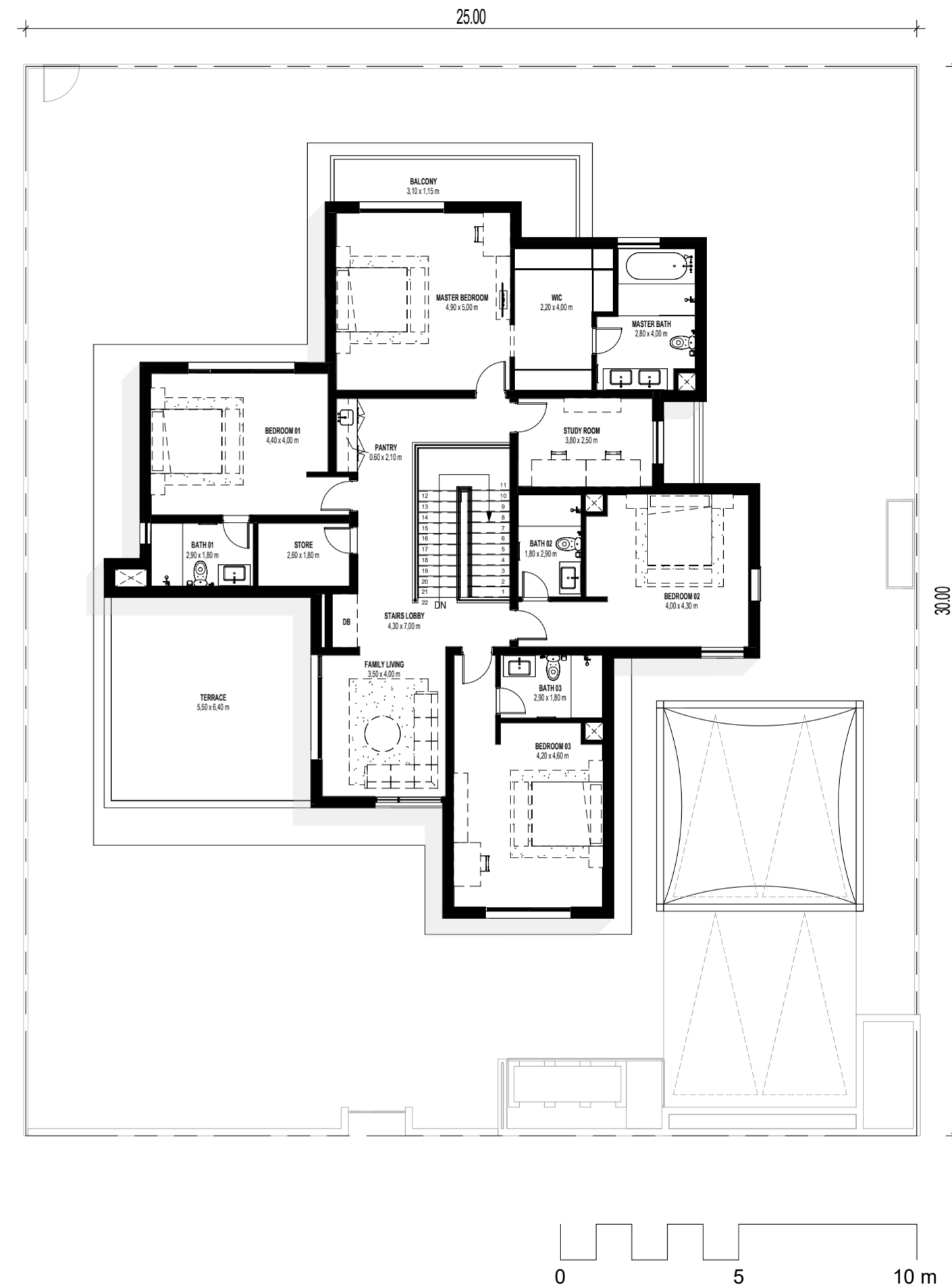
FIRST FLOOR

Disclaimer: This plan is reproduced for illustrative purposes as an example of a typical plot layout and Aldar makes no representation of warranty in relation to any of the information shown.

# VILLA TYPE 2 / 5 BEDROOM



GROUND FLOOR



FIRST FLOOR

Disclaimer: This plan is reproduced for illustrative purposes as an example of a typical plot layout and Aldar makes no representation of warranty in relation to any of the information shown.

# VILLA TYPE 1 / 6 BEDROOM



GROUND FLOOR



FIRST FLOOR

Disclaimer: This plan is reproduced for illustrative purposes as an example of a typical plot layout and Aldar makes no representation of warranty in relation to any of the information shown.



**ALDAR SQUARE**

YAS ISLAND, NEXT TO YAS MALL, ABU DHABI

800 25327  
SALES@ALDAR.COM

**WORKING HOURS**

MON-FRI  
8:00 AM-4:00 PM

---

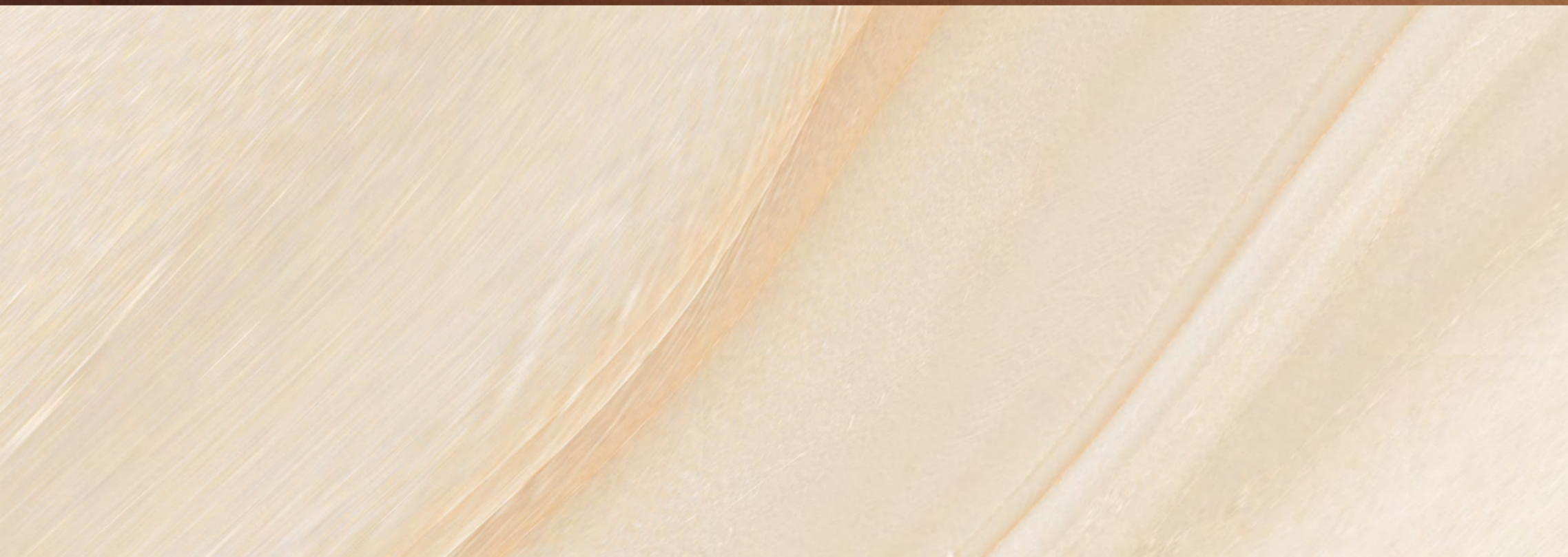
**YAS SALES CENTRE**

YAS ISLAND, NEXT TO YAS LINKS, ABU DHABI

800 25327  
SALES@ALDAR.COM

**WORKING HOURS**

MON-FRI  
8:00 AM-4:00 PM





5@85F K5@85F"7CA